



CITY OF ALBANY CITY COUNCIL AGENDA STAFF REPORT

Agenda Date: June 2, 2025
Reviewed by: NA

SUBJECT: Annual State Senate Bill 1/Road Maintenance and Rehabilitation Account (SB1/RMRA) Project List Submittal for Funding by the Road Repair and Accountability Act of 2017

REPORT BY: Devora Zauderer, Program Manager
Allison Carrillo, CIP Manager
Mark Hurley, Public Works Director/City Engineer

SUMMARY

Agencies who receive pass-through distributions from the state's Road Maintenance and Rehabilitation Account (RMRA) must annually identify an appropriate project to utilize the funding distribution. Staff recommend resubmission of the Marin Avenue Pavement Rehabilitation Project under the City's Annual Street Rehabilitation Program (CIP No. 21000) for project listing submittal to the California Transportation Commission (CTC). This action has been structured to specifically comply with the reporting requirements of the Road Maintenance and Repair Act of 2017 (SB1).

STAFF RECOMMENDATION

That the Council adopt Resolution No. 2025-41, authorizing staff to submit for re-listing the following proposed project to be funded in-part or solely with Fiscal Year 2025-26 Road Maintenance and Rehabilitation Account revenues:

- Project Title: **Marin Avenue Pavement Rehabilitation Project**
- Project Description: The project consists of rehabilitation of a main arterial street, including three-quarters of a mile of paving, curb ramps, bulbouts, drainage improvements, striping and signage improvements, bikeway improvements, and green infrastructure. This project has an updated Albany CIP project number for the Marin Avenue Pavement and Curb Ramp Rehabilitation Project (CIP No. 23004).
- Project Location: Marin Avenue between Cornell Avenue and Tulare Avenue (City Limits)
- Estimated Project Schedule: Phase 1 - Completed; Phase 2 - Construction estimated to start Fall 2025, estimated project completion Fall 2026.
- Estimated Project Useful Life: approximately 30 years

BACKGROUND

Senate Bill 1 (SB 1) was passed by the State Legislature and signed into law by the Governor in April 2017 to address basic road maintenance, rehabilitation, and critical safety needs on both the state highway and local streets and roads system. SB 1 increases per gallon fuel excise taxes, diesel fuel sales taxes and vehicle registration fees and provides for inflationary adjustment to tax rates in future years.

SB 1, the Road Repair and Accountability Act of 2017 established a new Road Maintenance and Rehabilitation Account (RMRA) to fund road maintenance, rehabilitation, and critical safety projects on the local street and road systems.

The Annual Street Rehabilitation Program (CIP No. 21000) was established as part of the City's five-year Capital Improvement Program to invest annually in improving and maintaining pavement conditions in the City. In FY25/26, the City is expected to receive an estimated \$573,383¹ in RMRA funds. Receipt of funding is anticipated annually. As a condition for receiving these funds, cities and counties are required to submit an annual project list to the California Transportation Commission (CTC). The FY25/26 project list, which includes details such as project scope, location, schedule and estimated usable life, is due by July 1, 2025. Projects included on the list must be specifically identified, by resolution, at a regular public meeting.

SB 1 includes accountability and transparency provisions that require cities and counties to provide annual project reporting to the CTC to ensure that public funds are efficiently invested in maintaining local streets and roads. The CTC will track and report on performance goals. In general, this reporting requirement consists of submitting to the CTC an annual project list detailing the scope of projects expected to be completed in a fiscal year and a project completion report detailing what was completed.

Previously, staff submitted the Marin Pavement Rehabilitation Project for the FY20/21 (Resolution No. 2020-25), FY22/23 (Resolution No. 2022-54), FY23/24 (Resolution No. 2023-28), and FY24/25 (Resolution No. 2024-29) allocations, as approved by the Council. The project is being relisted at this time to increase SB1/RMRA funding support to the project, which has an estimated cost of \$8,000,000 including contingency and bid alternates.

DISCUSSION

Since 2017, the City has used RMRA funding to complete several pavement rehabilitation projects:

- Evelyn Avenue between Portland and Garfield
- Madison Avenue as part of the 2018 Paving Maintenance Project

¹ See revenue projections here: <https://californiacityfinance.com/LSR2505.pdf>

- Phases I & II of the Washington Avenue Pavement Rehabilitation Project
- Marin Avenue Pavement Rehabilitation Project – Phase 1

The upcoming fiscal year's allocation of RMRA funds is proposed to continue to fund the Marin Avenue Curb Ramp and Pavement Rehabilitation Project – Phase 2.

Phase 1 improvements began construction in November 2022 and are now completed. This project phase consisted of 56,000 square feet of pavement rehabilitation, as well as rehab and upgrades to associated curb ramps, storm drain facilities, and striping and signage. The Phase 2 project is currently authorized for bid (Contract No. C24-57, Resolution No. 2025-21) and is currently estimated for construction Fall 2025 through Fall 2026. Phase 2 includes elements standard for a paving & curb ramp project under the Annual Street Rehabilitation Program, such as pavement rehabilitation and curb ramp improvements, but also includes bicycle & pedestrian safety improvements, traffic signal renewal, and potential streetlighting enhancements.

SOCIAL EQUITY AND SUSTAINABILITY CONSIDERATIONS

This project involves the removal and replacement of existing asphalt concrete pavement, curbs, gutters, and installation of ADA-compliant curb ramps. Accessible curb ramps provide greater mobility for pedestrian and ADA (American Disability Act) users, thus promoting non-motorized travel and reducing greenhouse gas emissions. The Phase 2 Project also includes Cold-In-Place-Recycling (CIPR) methodology for pavement reuse, which reduces trucked miles for materials offhaul.

CITY COUNCIL STRATEGIC PLAN INITIATIVES

This project supports the following City Council Strategic Plan goal(s):

Goal 3: Promote Streets that Support Safety, Transportation & Mobility Options

FINANCIAL CONSIDERATIONS

Staff continues to anticipate an ongoing annual allocation from the RMRA in the range of \$450,000 – \$575,000. Receipt of RMRA funding is generally anticipated and included in the City's Capital Improvement Plan budget assigned to the Annual Street Rehabilitation Program (CIP No. 21000). This program reflects the City's commitment to investing annually in maintaining and improving the City's public right-of-way. The Marin Pavement and Curb Ramp Rehabilitation Project – Phase 2 was initiated as a paving project under this Core Program but was further developed to incorporate streetscape elements. For administrative purposes, the project has been separated from the Annual Street Rehabilitation Program into a standalone, discrete project with CIP Project No. 23004. Future allocations of SB1 funding will be assigned to the Annual Street Rehabilitation Program once the Marin Phase 2 Project is completed.

The City's estimated distribution of funds for fiscal year 2025-26 is \$573,383 and is restricted for the registered project. Appropriation of funds will be recommended at the time of construction contract award.

Attachment

1. Resolution No. 2025-41
2. Local Streets and Roads Estimates (May 2025)

**A RESOLUTION OF THE ALBANY CITY COUNCIL AUTHORIZING
A LIST OF PROJECTS FOR FISCAL YEAR 2025-26 FUNDED BY
SB-1: THE ROAD REPAIR AND ACCOUNTABILITY ACT OF 2017**

WHEREAS, the City has undergone a robust public process to ensure public input into our community’s transportation priorities, and invests annually into the City’s streets and roads under the Capital Improvement Program’s Annual Street Rehabilitation Program

1 (CIP No. 21000) and associated projects, including the Marin Pavement and Curb Ramp
2 Rehabilitation Project – Phase 2 (CIP No. 23004); and
3

4 **WHEREAS**, the City uses a Pavement Management System to develop the CIP and
5 SB 1 project lists to ensure revenues are being used on the most high-priority and cost-
6 effective projects that also meet the community’s priorities for transportation investment;
7 and
8

9 **WHEREAS**, the SB 1 project list and overall investment in our local streets and
10 roads infrastructure with a focus on basic maintenance and safety, investing in complete
11 streets infrastructure, and using cutting-edge technology, materials and practices, will have
12 significant positive co-benefits statewide.
13

14 **NOW, THEREFORE IT IS HEREBY RESOLVED, ORDERED AND FOUND**
15 by the Albany City Council, as follows:

- 16 1. The foregoing recitals are true and correct.
17 2. The following project is being re-listed at this time to be funded in-part or solely
18 with Fiscal Year 2025-26 Road Maintenance and Rehabilitation Account
19 revenues:

- 20 a. Project Title: **Marin Avenue Pavement Rehabilitation Project**
21
22 b. Project Description: The project consists of rehabilitation of a main
23 arterial street, including three-quarters of a mile of paving, curb ramps,
24 bulbouts, drainage improvements, striping and signage improvements,
25 bikeway improvements, and green infrastructure. This project has an
26 updated Albany CIP project number for the Marin Avenue Pavement and
27 Curb Ramp Rehabilitation Project (CIP No. 23004).
28
29

- c. Project Location: Marin Avenue between Cornell Avenue and Tulare Avenue (City Limits)
- d. Estimated Project Schedule: Phase 1: Completed; Phase 2: Construction start est. Fall 2025, project completion est. Fall 2026.
- e. Estimated Project Useful Life: approximately 30 years.

ROBIN D. LÓPEZ, MAYOR

Shared Revenue Estimates: State Revenue Allocations to Cities and Counties
Local Streets and Roads Estimates: 2024-25, 2025-26
Including Highway Users Tax Account (HUTA) and
Road Maintenance and Rehabilitation Account (RMRA)

The state of California imposes per-gallon excise taxes on gasoline and diesel fuel, sales taxes on gasoline and diesel fuel and registration taxes on motor vehicles with allocations dedicated to transportation purposes.¹ The local (city and county) portions of these allocations flow through the Highway Users Tax Account (HUTA), the familiar gasoline tax revenues that have been in place for decades, and the Road Maintenance and Rehabilitation Account (RMRA) which allocates much of the revenue from the Road Repair and Accountability Act of 2017 (SB1 Beall).

State taxes transferred to and allocated through the state Highway Users Tax Account (HUTA) include:

- The per gallon “gasoline tax” and “diesel fuel tax” imposed on the use of vehicle fuels.
- The “use fuel tax,” imposed on vendors and users of motor vehicle fuels that are not taxed under either the gasoline or diesel fuel tax, such as liquefied petroleum gas, ethanol, methanol and natural gas (both liquid and gaseous) for use on state highways. Use Fuel Tax rates vary depending on the type of fuel.
- Variable rate per gallon gasoline diesel fuel excise taxes imposed in 2010-11 in a complicated arrangement known as the “fuel tax swap.” This rate replaced the previous Proposition 42 sales tax on gasoline.

Transportation taxes allocated to cities and counties through the Road Maintenance and Rehabilitation Account (RMRA) established by the Road Repair and Accountability Act of 2017 (SB1 Beall) include:

- An additional 12 cent per gallon increase to the gasoline excise tax effective November 1, 2017 with annual inflation adjustments beginning July 1, 2020.
- An additional 20 cent per gallon increase to the diesel fuel excise tax effective November 1, 2017 with half of the revenues going to the state Trade Corridor Enhancement Account (TCEA) and half to the RMRA. Annual inflation adjustments beginning July 1, 2020.
- An additional vehicle registration tax called the “Transportation Improvement Fee” with rates based on the value of the motor vehicle effective January 1, 2018 with annual inflation adjustments beginning July 1, 2020.
- An additional \$100 vehicle registration tax on zero emissions vehicles of model year 2020 or later effective July 1, 2020 with annual inflation adjustments beginning July 1, 2021.

The Road Repair and Accountability Act of 2017 (SB1 Beall) also adopted annual inflationary adjustments beginning July 1, 2020 to all per-gallon motor vehicle fuel excise taxes including the rates allocated through the Highway Users Tax Account (HUTA).

¹ Taxes on aircraft jet fuel are transferred to the state Aeronautics Account.

Highway Users Tax Account (HUTA)

Revenue Allocations – Streets & Highways Code Sec 2103-2108 “HUTA”

Cities and counties receive revenue from the motor vehicle fuel taxes imposed pursuant to Revenue and Taxation Code Section 7360(a) and (b) through the Highway User Tax Account under the following formulas outlined in the Streets and Highways code and illustrated in Figure 1.

Section 2104. Section 2104 allocates funds to counties with designated allotments for engineering and administration, snow removal, heavy rainfall / storm damage as well as county streets, roads and public mass transit guideways and facilities.

Section 2105. Section 2105(a) allocates 11.5 percent of the tax revenues in excess of 9 cents per gallon (i.e. the Proposition 111 rate) monthly among counties based on population.

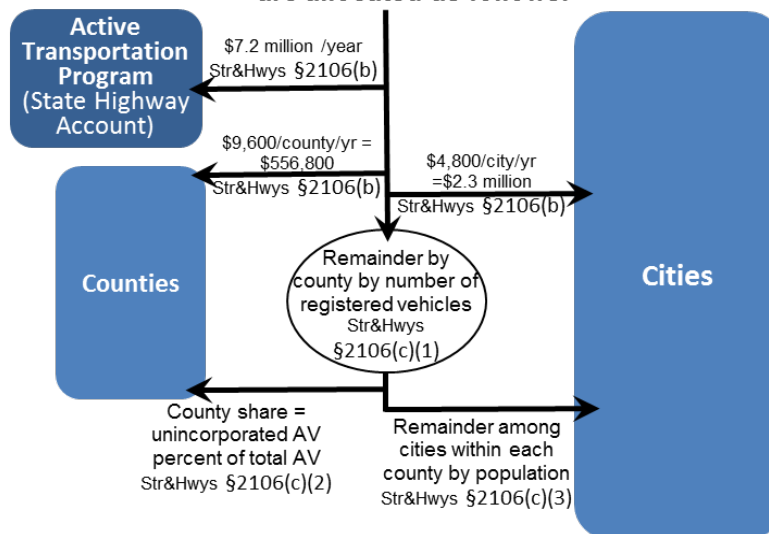
Section 2105(b) allocates 11.5 percent of the tax revenues in excess of 9 cents per gallon (i.e. the Proposition 111 rate) monthly among cities based on population.

Section 2106. Revenues equal to 1.04 cents per gallon are allocated as follows:

- \$7.2 million per year to the State Bicycle Transportation Account.
- \$400 per month to each city (\$2,308,800 per year among the 481 eligible cities²)
- \$800 per month to each county (\$556,800 per year among the 58 counties)
- The residual amount to each county and the cities in that county based on registered vehicles. In each county, from this amount, the county receives an allotment based on the share of assessed value of the county which is in the unincorporated area. The remainder is allocated to the cities within the county based on population.

Streets & Highways Code Section 2106

Revenues equal to 1.04 cents per gallon
are allocated as follows:



² The city of Rolling Hills has only private streets and is therefore not eligible to receive these allocations.

Section 2107. This section provides monthly allocations to cities of 1.315 cents per gallon of gasoline, 1.8 cents per gallon of diesel, and 2.59 cents per liquefied petroleum gas (LPG), as follows.

- a. Each city with snow removal costs in excess of \$5,000 is allocated 50 percent of the cost exceeding \$5,000.
- b. The remainder is allocated to cities based on population.

Section 2107.5. These funds (about \$2.7 million per year) are allocated to cities annually in July based on population as follows:

Streets & Highway Code §2107.5	
City Population	Annual Allocation
over 500,000	\$ 20,000
100,000 to 500,000	\$ 10,000
50,000 to 99,999	\$ 7,500
25,000 to 49,999	\$ 6,000
20,000 to 24,999	\$ 5,000
15,000 to 19,999	\$ 4,000
10,000 to 14,999	\$ 3,000
5,000 to 9,999	\$ 2,000
less than 5,000	\$ 1,000

Section 2107.5 funds must be used for engineering costs and administrative expenses related to city streets. Cities with populations under 10,000 may also expend the moneys for street construction or acquisition of street rights-of-way.

Section 2103 HUTA and the 2010 Gasoline Sales Tax – Excise Tax Swap

In March 2010 as a part of a special budget session called by Governor Schwarzenegger, the Legislature enacted a swap of state sales taxes on gasoline for a gasoline excise tax. Intended to be “revenue neutral,” the fuel tax swap provided the Legislature with greater flexibility in the use of funds, in particular relieving the general fund from the cost of state transportation debt service payments. The fuel tax swap:

1. Repealed the state sales tax on gasoline (local rates including the Bradley Burns are NOT affected);
2. Increased the excise tax on gasoline by 17.322 cents and added an annual adjustment mechanism intended to ensure the new excise tax provides, over time, the same amount of revenues expected from the sales tax on gas (no more, no less);
3. Increased the sales tax on diesel by 1.75 percent and allocated 75 percent to local transit agencies and 25 percent to state transit programs. The excise tax on diesel was reduced from 18 cents to 13.6 cents. Sales tax revenues from diesel must go to transit funding.
4. Provided for a specific allocation of the funds among state and local transportation needs.

Revenues from the new Section 2103 excise tax rate are now allocated as follows:

1. State transportation debt service;
2. Remainder allocated:
 - a. 44 percent to the State Transportation Improvement Program (STIP);
 - b. 12 percent State Highway Operation and Protection Program (SHOPP);
 - c. 44 percent evenly split between cities and counties using current HUTA formulas.

Section 2103 funds are allocated to cities on a per capita basis and to counties 75 percent based on the proportion of registered vehicles and 25 percent based on the proportion of maintained county road miles.

The law included expressed legislative intent to fully replace the local streets and road funds cities and counties would have received under Proposition 42 state sales tax on gasoline with allocations from the new higher motor vehicle excise tax (HUTA) rate.

However, the swap created certain revenue effects related to the timing and receipt of revenues. In particular, the law provided that the new excise tax rate be adjusted annually by the BOE to garner an amount of revenues equal to what Prop42 would have provided in the prior year. Thus, the annual Sec 2103 funds were always “looking backward.” If the Section 2103 amounts generated less than Prop42 would have, the difference was made up until the following year.

In the years following the swap, there were a number of snafus and changes in interpretation of the Section 2103 allocation. In FY2011-12 SCO allocated more money to cities and counties and did not fully backfill state transportation programs for weight fees that were used for debt service and loans that those funds would have otherwise received. This was contrary to the Legislature’s intention, but the statute was not clear. The statute was clarified in the 2013 budget to clarify the original intent of the weight fee swap to fully backfill state transportation funds. [Streets & Highways Code 2103 (a)(1)(D)].

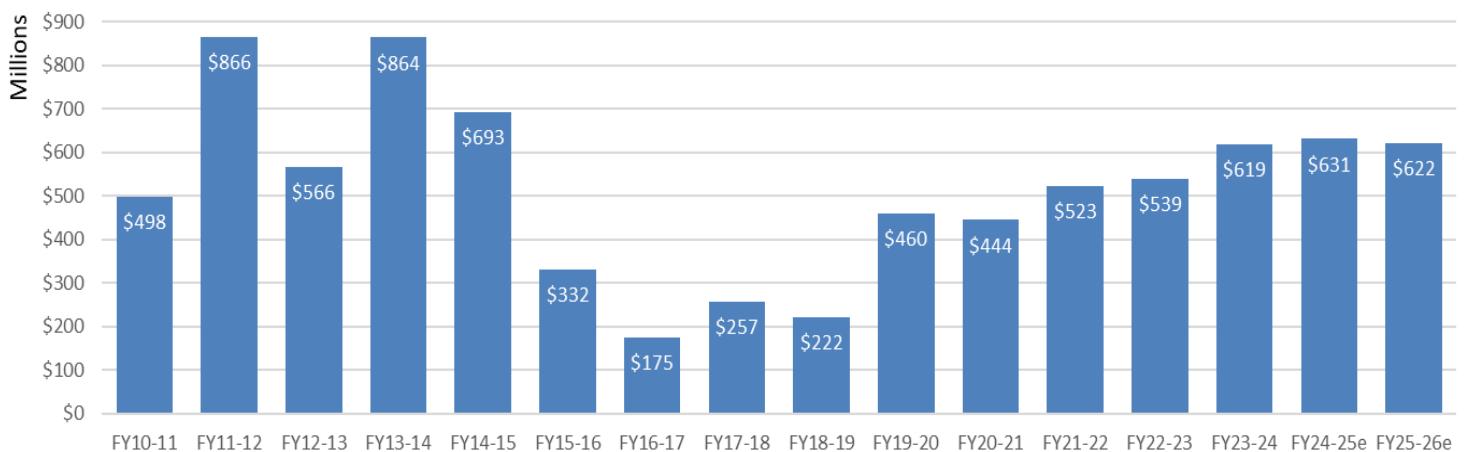
Changes to HUTA Allocated Rates, Including the Variable Rate by the Road Repair and Accountability Act of 2017 (SB1 Beall)

In addition to increasing various fuel and motor vehicle registration taxes, the Road Repair and Accountability Act of 2017 (SB1 Beall) removed BOE’s discretionary rate setting role over the Section 2103 variable rate and reset the variable rate at 17.3 cents per gallon on July 1, 2019, up from the current 11.7 cents. This adjustment more than doubled Section 2103 revenue allocations for FY2019-20 over the prior year.

With regard to diesel fuel taxes, SB1 also eliminated the price-based adjustment mechanism applied to the diesel fuel tax rate.

Since 2020, gasoline and diesel fuel excise tax rates are increased on July 1 by the change in the California Consumer Price Index from the prior year. These include the 18 cent per gallon base rate, the 17.3 percent per gallon rate, the diesel fuel excise tax rate and vehicle registration taxes.

Streets & Highways Code Section 2103 Variable Gas Tax Allocations to Cities and Counties

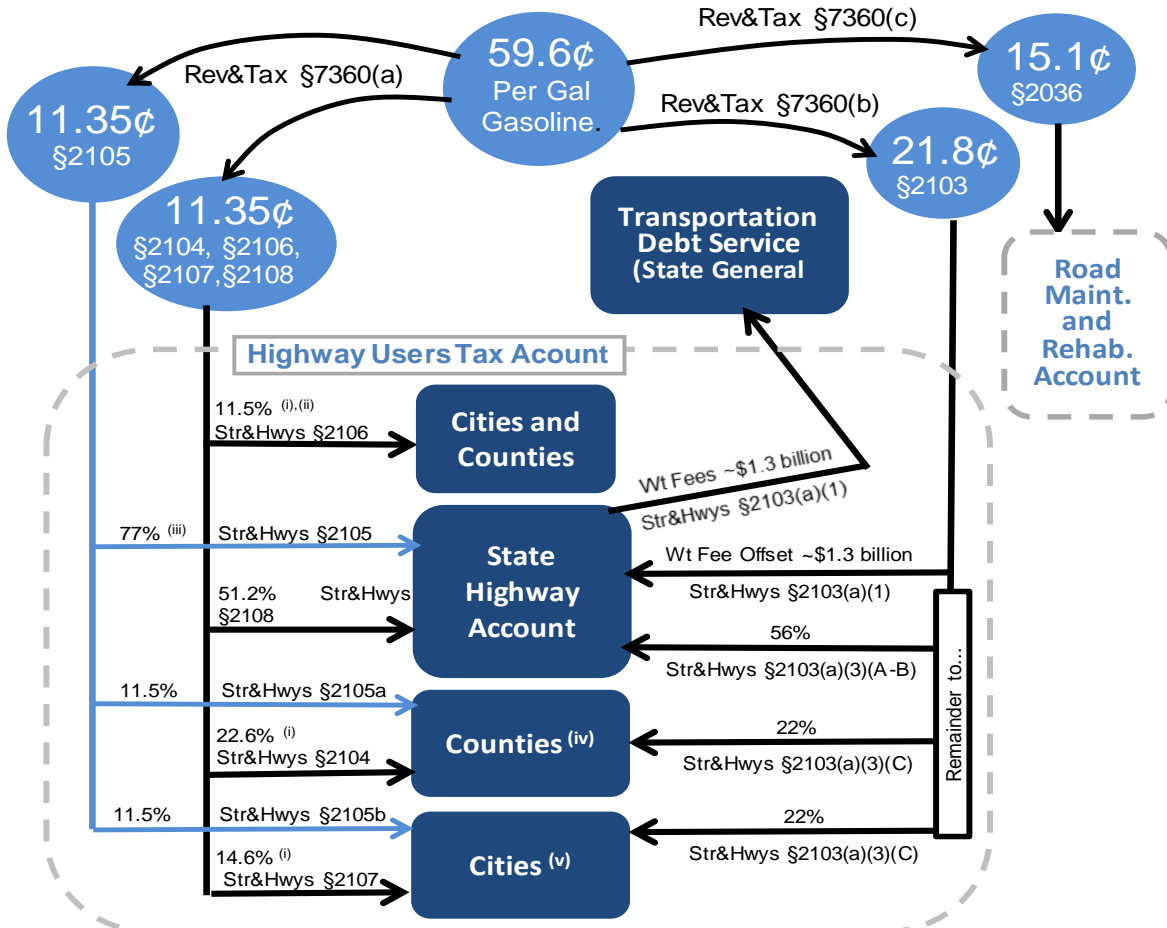


California Gasoline Excise Tax Rates - Per Gallon				
Effective Date	Base Rate	Sec2103	SB1 Rate	Total
July 1, 2015	\$ 0.180	\$ 0.120		\$ 0.300
July 1, 2016	\$ 0.180	\$ 0.098		\$ 0.278
July 1, 2017	\$ 0.180	\$ 0.117		\$ 0.297
Nov 1, 2017*	\$ 0.180	\$ 0.117	\$ 0.120	\$ 0.417
July 1, 2019	\$ 0.180	\$ 0.173	\$ 0.120	\$ 0.473
July 1, 2020	\$ 0.192	\$ 0.185	\$ 0.128	\$ 0.505
July 1, 2021	\$ 0.194	\$ 0.187	\$ 0.130	\$ 0.511
July 1, 2022	\$ 0.205	\$ 0.197	\$ 0.137	\$ 0.539
July 1, 2023	\$ 0.220	\$ 0.212	\$ 0.147	\$ 0.579
July 1, 2024	\$ 0.227	\$ 0.218	\$ 0.151	\$ 0.596
July 1, 2025e	\$ 0.233	\$ 0.224	\$ 0.155	\$ 0.612

California Diesel Excise Tax Rates			
Effective Date	Base Rate	SB1 Rate	Total
July 1, 2017	\$ 0.160		\$ 0.160
Nov 1, 2017*	\$ 0.160	\$ 0.200	\$ 0.360
July 1, 2019	\$ 0.160	\$ 0.200	\$ 0.360
July 1, 2020	\$ 0.171	\$ 0.214	\$ 0.385
July 1, 2021	\$ 0.173	\$ 0.216	\$ 0.389
July 1, 2022	\$ 0.182	\$ 0.228	\$ 0.410
July 1, 2023	\$ 0.196	\$ 0.245	\$ 0.441
July 1, 2024	\$ 0.202	\$ 0.252	\$ 0.454
July 1, 2025e	\$ 0.207	\$ 0.259	\$ 0.466

Allocation of Gasoline Excise Tax Revenues

rates effective July 1, 2024



(ii) Str&Hwy Code §2106 funds are distributed based on registered vehicles, assessed property valuation, and population.

(iii) A portion of funds in State Highway Account is allocated among counties and cities for Regional Transportation Improvement Programs.

(iv) County apportionments are based on numbers of registered vehicles and county road mileage.

(v) City apportionments are based on population.

(vi) These rates are adjusted annually on July 1 for inflation (consumer price index).

Use of Funds: HUTA

The use of local Motor Vehicle Fuel Tax funds is restricted by Article XIX of the California State Constitution and by Streets and Highways Code Section 2101. All Motor Vehicle Fuel Tax funds allocated from the Highway Users Tax Account must be expended for the following:

- (a) The research, planning, construction, improvement, maintenance, and operation of public streets and highways (and their related public facilities for nonmotorized traffic), including the mitigation of their environmental effects, the payment for property taken or damaged for such purposes, and the administrative costs necessarily incurred in the foregoing purposes.
- (b) The research and planning for exclusive public mass transit guideways (and their related fixed facilities), the payment for property taken or damaged for such purposes, and the administrative costs necessarily incurred in the foregoing purposes.
- (c) The construction and improvement of exclusive public mass transit guideways (and their related fixed facilities), including the mitigation of their environmental effects, the payment for property taken or damaged for such purposes, the administrative costs necessarily incurred in the foregoing purposes, and the maintenance of the structures and the immediate right-of-way for the public mass transit guideways.
- (d) The payment of principal and interest on voter-approved bonds issued for the purposes specified above.

Three Year State General Fund TCRF Loan Repayment Funds

SB1 stipulated the repayment of \$706 million by the state General Fund to transportation funds over three fiscal years: 2017-18, 2018-19, and 2019-20. Under SB1, \$75 million was allocated to local streets and roads from repayments of Transportation Congestion Relief Funds (TCRF) in each of these three years. These funds were allocated half to cities and half to counties with the city funds allocated among cities on a per capita basis, the county funds allocated among counties based on numbers of registered vehicles and county road mileage.

These TCRF revenues may be deposited in local HUTA funds.³ However, these TCRF funds carried slightly different use requirements than HUTA funds. TCRF funds could be expended only for street and highway maintenance, rehabilitation, reconstruction or storm damage repair. For these purposes,

- “Maintenance” means patching and/or overlay and sealing.
- “Reconstruction” includes any overlay, sealing or widening of the roadway, if the widening is necessary to bring the roadway width to the state minimum standards, but does not include widening for the purpose of traffic capacity.
- “Storm damage repair” is repair or reconstruction of local streets and highways and related drainage improvements that have been damaged due to winter storms and flooding, and construction of drainage improvements to mitigate future roadway flooding and damage problems, in those jurisdictions that have been declared disaster areas by the President of the United States.

³ Note that the “loan repayment” is between the state general fund and state transportation funds. From an accounting standpoint this is NOT a debt repayment to local agencies, it is simply revenue.

Road Maintenance and Rehabilitation Account (RMRA)

Revenue Allocations – Streets & Highways Code Sec 2031 “RMRA”

The Road Repair and Accountability Act of 2017 (SB1 Beall) represented a significant additional investment in California’s transportation systems of over \$5 billion per year. The Act increased per gallon fuel excise taxes, diesel fuel sales taxes and vehicle registration taxes, stabilized the problematic price-based fuel tax rates and provided for inflationary adjustments to rates in future years. The Act is more than doubling local streets and road funds allocated through the Highway Users Tax Account (HUTA) and through the Road Maintenance and Rehabilitation Account (RMRA) which it established.

The RMRA receives funds⁴ from the following new taxes imposed under the Road Repair and Accountability Act of 2017:

- A 12 cent per gallon increase to the gasoline excise tax effective November 1, 2017.
- A 20 cent per gallon increase to the diesel fuel excise tax effective November 1, 2017, half of which will be allocated to Trade Corridors Enhancement Account (TCEA) with the remaining half to the RMRA.
- A new vehicle registration tax called the “transportation improvement fee,” effective January 1, 2018, based on the market value of the vehicle.
- An additional new \$100 vehicle registration tax on zero emission vehicles model year 2020 and later effective July 1, 2020.
- Annual rate increases to these taxes every July 1 (January 1 for the registration fees) for the change in the California Consumer Price Index. The first adjustment made on July 1, 2020 covered CPI change for two years: November 1, 2017 through November 12, 2019.

SB1 Transportation Improvement Fee							
Vehicle Value	Jan 2018	Jan 2020	Jan 2021	Jan 2022	Jan 2023	Jan 2024	Jan 2025
0 - \$4,999	\$ 25	\$ 27	\$ 27	\$ 28	\$ 29	\$ 32	\$ 32
\$5,000 - \$24,999	\$ 52	\$ 54	\$ 55	\$ 56	\$ 59	\$ 65	\$ 65
\$25,000 - \$34,999	\$ 105	\$ 107	\$ 110	\$ 112	\$ 118	\$ 129	\$ 129
\$35,000 - \$59,999	\$ 157	\$ 161	\$ 165	\$ 168	\$ 177	\$ 194	\$ 194
\$60,000 & over	\$ 183	\$ 188	\$ 192	\$ 196	\$ 206	\$ 227	\$ 227

SB1 Road Improvement Fee (RIF)							
	Jan 2020	Jan 2021	Jan 2022	Jan 2023	Jan 2024	Jan 2025	
ZEV vehicle*	\$ 100	\$ 101	\$ 103	\$ 108	\$ 118	\$ 118	

⁴ In addition, funds from a 4 percent increase in the diesel sales tax to 5.75 percent from the prior 1.75 percent effective November 1, 2017 are allocated to the Public Transportation Account.

```
graph TD; A[Gasoline Excise Tax 15.0 cent/gal *] --> D[Trade Corridor Enhancement Account (TCEA)]; A --> E[50%]; E --> F[Road Maintenance & Rehabilitation Account (RMRA)]; A --> G[50%]; G --> F; A --> H[Road Maintenance & Rehabilitation Account (RMRA)]; B[Transportation Improvement Fee*] --> I[remainder]; I --> F; B --> J[State Highway Account]; B --> K[250 m/yr congested corridors]; K --> J; B --> L[350 m/yr transit]; L --> M[Public Transportation Account]; C[Diesel Excise Tax 25.0 cent/gal *] --> D; C --> F; N[Zero Emission Vehicle Fee**] --> F; O[Diesel Sales Tax +4.00% to 5.75%] --> M;
```

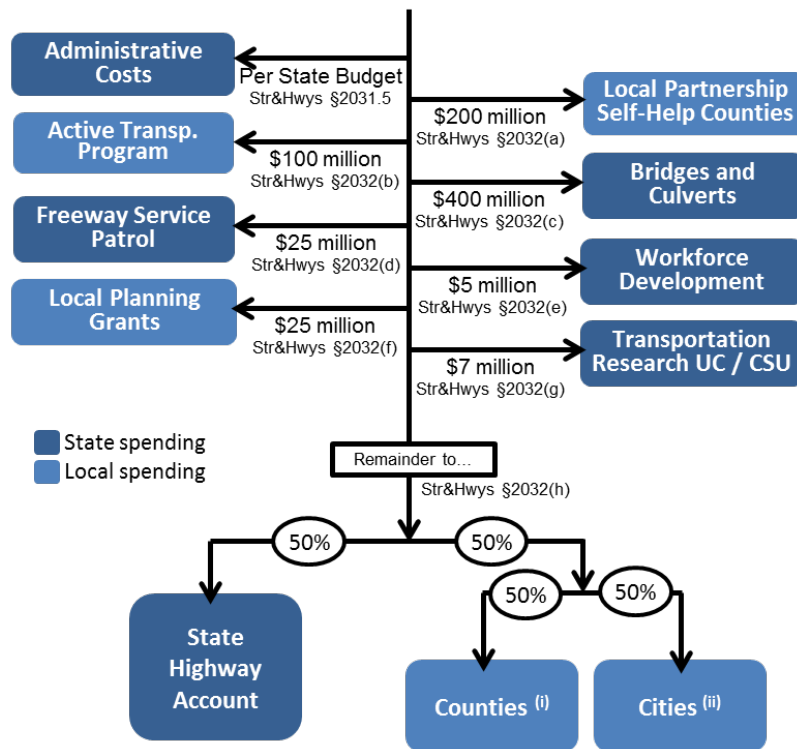
The flowchart illustrates the distribution of transportation taxes and fees into various accounts. The sources and their allocations are as follows:

- Gasoline Excise Tax 15.0 cent/gal ***
 - 50% to **Trade Corridor Enhancement Account (TCEA)**
 - 50% to **Road Maintenance & Rehabilitation Account (RMRA)**
 - Directly to **Road Maintenance & Rehabilitation Account (RMRA)**
- Transportation Improvement Fee***
 - remainder to **Road Maintenance & Rehabilitation Account (RMRA)**
 - to **State Highway Account**
 - to **250 m/yr congested corridors**, which then flows to the **State Highway Account**
 - to **350 m/yr transit**, which flows to the **Public Transportation Account**
- Diesel Excise Tax 25.0 cent/gal ***
 - to **Trade Corridor Enhancement Account (TCEA)**
 - to **Road Maintenance & Rehabilitation Account (RMRA)**
- Zero Emission Vehicle Fee****
 - to **Road Maintenance & Rehabilitation Account (RMRA)**
- Diesel Sales Tax +4.00% to 5.75%**
 - to **Public Transportation Account**

** effective 7/1/2020 adjusted for inflation annually beginning 7/1/2021

1. Administrative costs.
2. \$200 million for the State-Local-Partnership Program for existing and aspiring self-help jurisdictions.
3. \$100 million annually for the Active Transportation Program for the purpose of encouraging increased use of active modes of transportation, such as biking and walking.
4. \$400 million for state bridge and culvert maintenance and rehabilitation.
5. \$25 million for the state's Freeway Service Patrol program.
6. \$5 million for five years through FY 2021-22 for pre-apprenticeship training programs of the California Workforce Development Board.
7. \$25 million for local planning grants to encourage local and regional planning.
8. \$7 million for transportation research and transportation-related workforce education, training, and development including \$5 million to the University of California and \$2 million to the California State University.

Allocation of Road Maintenance and Rehabilitation Account Revenues



(i) County apportionments are based on numbers of registered vehicles and county road mileage.
 (ii) City apportionments are based on population.

Use of Funds: RMRA [Streets and Highways Code Section 2030]

The use of RMRA local streets and roads funds is similar but, not identical, to HUTA use rules. Pursuant to Streets and Highways Code Section 2030, RMRA local streets and roads allocations must be used for projects “that include, but are not limited to,” the following

- Road maintenance and rehabilitation
- Safety projects
- Railroad grade separations
- Traffic control devices
- Complete street components, “including active transportation purposes, pedestrian and bicycle safety projects, transit facilities, and drainage and storm-water capture projects in conjunction with any other allowable project.”

RMRA funds may also be used to satisfy a match requirement for projects eligible for state or federal funds.

SB1 also contains non-obligatory intent language regarding the use of funds. “To the extent possible and cost effective,” cities and counties are to use a use:

- advanced recycling techniques that reduce greenhouse gas emissions;
- automotive technologies, ZEV fueling, infrastructure-to-vehicle;
- communications autonomous vehicle systems;
- resiliency re climate change, fires, floods, sea level rise; and
- complete street elements, access for bicycles, pedestrians.

If a city or county has an average Pavement Condition Index that meets or exceeds 80, the city or county may spend its RMRA funds on transportation priorities other than these. [Streets and Highways Code Sec 2037]

Maintenance of Effort: RMRA [Streets and Highways Code Sec 2036]

The Road Repair and Accountability Act contains a local agency maintenance of effort (MOE) requirement that applies to funds allocated through the RMRA. The Act states that the MOE requirement is to ensure that these new roads funds do not supplant existing levels of city and county general revenue spending on streets and roads. The MOE for the receipt of RMRA funds state that a city or county must maintain general fund spending for street, road, and highway purposes at no less than average of 2009–10, 2010–11, and 2011–12 years. In making this calculation an agency may exclude one-time funds. A city or county that fails to comply in a particular year may make it up with in additional expenditures in the following year.

The Act provides that the State Controller may perform audits to ensure compliance with these MOE rules. If the State Controller determines that a city or county has not met its MOE, the agency will be required to reimburse the state for the funds it received during that fiscal year. However, a city or county that fails to comply in a particular fiscal year may expend during that fiscal year and the following fiscal year a total amount that is sufficient to comply. Any funds withheld or returned as a result of a failure to comply will be reapportioned to the other counties and cities whose expenditures are in compliance.

For further guidance, see the State Controller’s *“Guidelines Relating to Gas Tax Expenditures for Cities and Counties.”*

Spending Plans and Reports: RMRA [Streets and Highways Code Sec 2034]

The Road Repair and Accountability Act stipulates that, prior to receiving RMRA funds in a fiscal year, a city or county must submit to the California Transportation Commission (CTC) a project list pursuant to an adopted budget. The list must include for each project: description, location, schedule, useful life. [Streets and Highways Code Sec 2034(a)]

The Road Repair and Accountability Act also requires that a city or county submit to the CTC an annual report of project completion in order to receive RMRA funds. The report must include descriptions of all projects for which RMRA funds were expended including: description, location, funds expended, completion date, estimated useful life of the project.

Budgeting and Accounting for RMRA Funds: The ~60 Day Delay

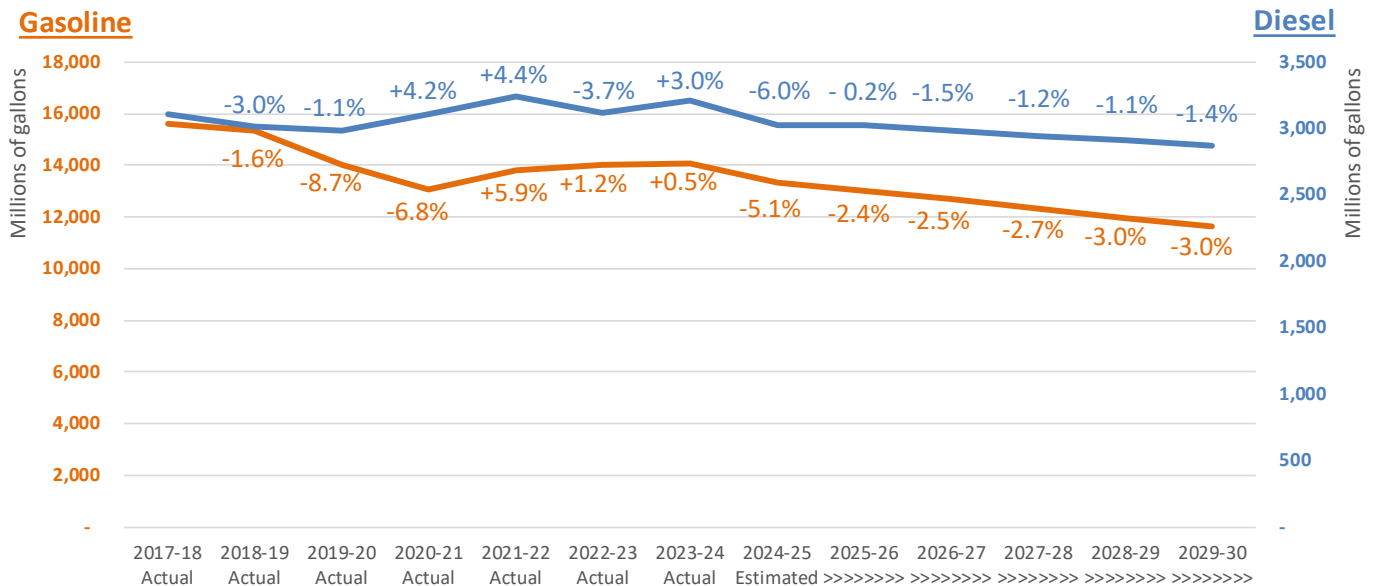
The allocation of Road Maintenance and Rehabilitation Account (RMRA) revenues to cities and counties takes many weeks. It takes the State Controller’s Office roughly 30 to 60 days from the time of revenue collection by the state, through the various statutory set asides to distribute the funds to cities and counties in monthly allocations. Consequently, the estimates shown in this report are for revenues collected for July through June are not received on a cash basis by local agencies until September through August. That is, for example, the FY2022-23 figure for your agency is revenues collected in and for July 2022 through June 2023 but distributed in monthly allocations September 2022 through August 2023. Cities and counties thus have two choices in the budgeting and accounting of RMRA revenues:

- 1) apply a 60 day accrual policy to RMRA funds (*recommended*); or
- 2) adjust RMRA budgets (especially in FY2017-18) to reflect a distributed cash basis.

Local Streets and Roads (HUTA and RMRA) Revenue Estimates for FY2024-25 and FY2025-26

We have computed revenue estimates for each city and county using a model reflecting the local allocation formulas, latest population figures used by the State Controller for allocations and estimates by the state Department of Finance (DOF) of statewide HUTA and RMRA tax revenues provided with the ***Governor's May Revision to the Proposed 2025-26 Budget (released May 14, 2025)*** and analyses of SB1(Beall), The Road Repair and Accountability Act of 2017.

Fuel consumption was sharply down during the height of the COVID-19 pandemic but has largely recovered to its prior, slightly declining trajectory. Recently, fuel prices have increased steeply but the price of fuel no longer has a direct effect on local streets and roads revenues because all rates are per gallon, regardless of price.



Despite lower fuel consumption, scheduled rate increases stipulated in SB1 have kept local allocations of revenue growing at a modest pace. Total LSR allocations (including HUTA, TCRF, and RMRA) were up 6.7 percent in 2022-23 and 10.8 percent in 2023-24. Nevertheless, as fuel consumption gradually declines, revenue growth will soften. The Department of Finance projects total LSR allocations to cities and counties in 2024-25 will be 5.1 percent above FY 2023-24. For the budget year FY2025-26, DOF estimates total statewide local streets and roads allocations will grow just 1.7 percent.

HUTA (Highway Users Tax Account)

HUTA revenues are allocated to cities and counties pursuant to Sections 2103-2107 of the Streets and Highways Code. The per gallon excise tax rates that provide HUTA revenues are adjusted annually on July 1 as described above. Revenue changes depend on the combined effects of 1) these rate adjustments, 2) taxable gallonage, and 3) the relative change of statutory transfers including the “weight fee offset” that pays state transportation bond debt.

Sec2103-2108 HUTA allocations (not including RMRA) grew 12.6 percent in FY2023-24 largely reflecting the post-pandemic economic recovery. HUTA revenue growth is now flattening and will begin to decline in a few years. DOF estimates 2.6 percent HUTA growth in current year FY2024-25, leveling off to 0.01 percent growth in budget year FY2024-25.

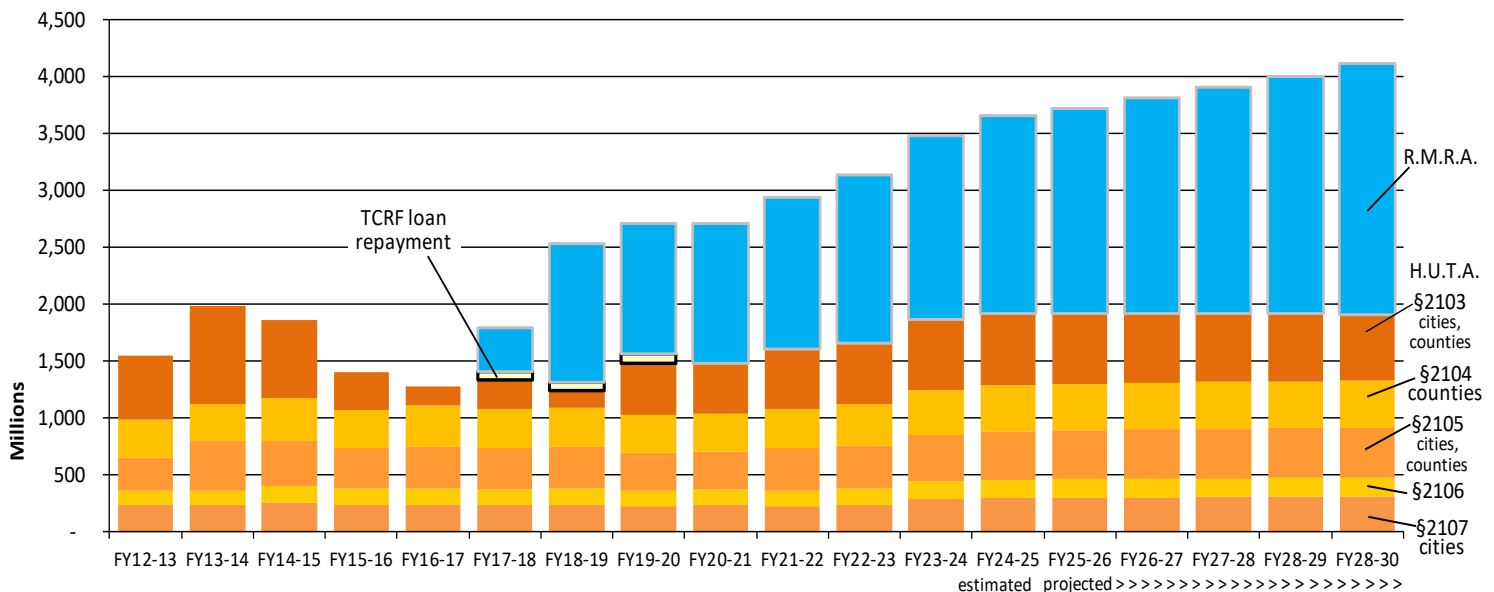
RMRA (Road Maintenance and Rehabilitation Account)⁵

The Road Repair and Accountability Act (SB1) taxes that provide funding to cities and counties through the RMRA began on November 1, 2017 when the new per-gallon fuel excise taxes took effect. It also includes allocations from the SB1 vehicle registration tax ("Transportation Improvement Fee") and the zero emission vehicle registration tax ("Road Improvement Fee").

DOF estimates FY2024-25 RMRA revenues will be 8.1 percent higher than FY2023-24 actuals and that FY2025-26 revenues will grow by 3.6 percent over the current year.

Why does city/county RMRA growth differ from city/county HUTA growth? Under SB1, various fixed-amount statutory allocations are made from the new SB1 tax rates prior to the city and county allocations. In addition, the \$1.3 million and growing "weight fee transfer" that is used to pay state transportation debt service is projected to grow more than the modest growth in HUTA revenues impacting the local allocations which follow.

California Local Streets and Roads Program - State Funds to Cities and Counties



Looking Ahead: Long Term Estimates of Local Streets and Roads Funding

Since the recovery following the COVID-19 pandemic of 2020, we have seen modest year over year growth in local streets and roads revenues. In future years, as alternative fuel vehicles come more into use, fuel consumption will continue to decline. The SB1 annual cost of living adjustments will help to maintain revenues but we will see decline in revenue growth to below the rate of inflation.

Due to complicated statutory transfers from these revenues before the city and county allocations are made (including the \$1.3 billion transfer for state transportation debt service), actual growth in funding allocated to cities and counties varies somewhat among the various categories of local streets and roads allocations and will not exactly mirror total tax collections. Taking all these factors into account, for the purposes of long-term

⁵ Note that RMRA revenues are delayed 60 days from collection to allocation. That is, the revenues for a July 1 to June 30 fiscal year are allocated September 1 through August 31. These are spendable in the fiscal year because your accounting staff "accrues" them back into your fiscal year.

transportation program planning, we estimate transportation allocations to cities and counties will increase in outyears at the following growth rates:

Estimated Annual Revenue Growth Rate over prior year

	<u>2025-26</u>	<u>2026-27</u>	<u>2027-28</u>	<u>2028-29</u>	<u>2029-30</u>
HUTA 2103	-1.4%	-1.2%	-2.0%	-2.1%	-2.5%
HUTA 2104	0.7%	0.7%	0.9%	0.6%	0.5%
HUTA 2105	0.7%	0.7%	0.9%	0.6%	0.5%
HUTA 2106	0.7%	0.7%	0.9%	0.6%	0.5%
HUTA 2107	0.7%	0.7%	0.9%	0.6%	0.5%
RMRA	3.6%	5.0%	5.1%	5.1%	6.1%

Your Mileage Revenues May Vary

Long-term, in addition to the growth in statewide local streets and roads revenue collections, the allocations to each particular city will be primarily related to changes in the city's population relative to the change in state population in cities. The current forecast for California population, provided by the Demographics Unit of the California Department of Finance is as follows:⁶

California	<u>2022</u>	<u>2023</u>	<u>2024</u>	<u>2025</u>	<u>2026</u>	<u>2027</u>	<u>2028</u>	<u>2029</u>	<u>2030</u>	<u>2031</u>
Population	39,185,605	38,990,487	38,991,721	39,024,054	39,068,081	39,131,779	39,213,804	39,323,647	39,430,871	39,532,028
..... in Cities	32,713,003	33,118,970	33,120,018	33,182,482	33,219,919	33,274,082	33,343,828	33,437,229	33,528,402	33,614,417
percent change		1.24%	0.00%	0.19%	0.11%	0.16%	0.21%	0.28%	0.27%	0.26%

	<u>2032</u>	<u>2033</u>	<u>2034</u>	<u>2035</u>	<u>2036</u>	<u>2037</u>	<u>2038</u>	<u>2039</u>	<u>2040</u>
Population	39,626,155	39,719,558	39,800,683	39,872,787	39,936,372	39,991,277	40,037,385	40,076,005	40,106,449
Population in Cities	33,694,454	33,773,875	33,842,856	33,904,167	33,958,234	34,004,920	34,044,126	34,076,965	34,102,852
percent change	0.24%	0.24%	0.20%	0.18%	0.16%	0.14%	0.12%	0.10%	0.08%

If you think your city's population growth will be significantly different from the statewide average in cities, then you should adjust accordingly. For example, the City of Buena Vista's planning department estimates the city will see average annual residential population growth of 1.5 percent annually over the next ten years. The city's estimated HUTA 2105 allocation for FY2025-26 is \$381,200. The long term projection of Section 2105 revenue would be:

$$\$381,200 \times \text{Sec2105 growth} \times \text{Buena Vista Population Growth} \div \text{Statewide City Population Growth}$$

$$\text{So, for 2026-27, the city would estimate } \$381,200 \times 1.007 \times 1.015 \div 1.0019 = \$388,829$$

And long term ...

<u>City of Buena Vista EXAMPLE</u>		<u>2025-26</u>	<u>2026-27</u>	<u>2027-28</u>	<u>2028-29</u>	<u>2029-30</u>	<u>2030-31</u>	<u>2031-32</u>
HUTA Sec2105	\$ 381,200							
2105 growth		0.7%	0.9%	0.6%	0.5%	0.0%	0.0%	
Buena Vista pop		1.5%	1.5%	1.5%	1.5%	1.5%	1.5%	
Cities pop		0.19%	0.11%	0.16%	0.21%	0.28%	0.27%	
HUTA Sec2105	\$	388,829	\$397,707	\$405,350	\$412,680	\$417,701	\$422,824	

⁶ See <http://www.dof.ca.gov/Forecasting/Demographics/projections/> California population in cities estimated by author based on recent historic trend of proportion of population in cities.

Changes for in allocations to an individual county will be affected by many things including: the population of the county relative to the total population of the state, proportion of population in the unincorporated area of the county, as well as relative numbers of vehicle registrations, assessed values and maintained road miles.

Next Update

The next update to these revenue estimates will be in January 2026.

mjgc

ATTACHMENTS:

- A) Local Streets and Roads - Projected Individual City Revenues – FY2024-25
- B) Local Streets and Roads - Projected Individual City Revenues – FY2025-26
- C) Local Streets and Roads - Projected Individual County Revenues – FY2024-25 (from CSAC)
- D) Local Streets and Roads - Projected Individual County Revenues – FY2025-26 (from CSAC)

Local Streets and Roads - Projected FY2024-25 Revenues

Based on State Dept of Finance statewide revenue projections

Estimated May 2025

Estimated May 2025	Highway Users Tax Acct (HUTA) ⁽¹⁾ Streets & Highways Code					TOTAL HUTA	Road Mntnc Rehab Acct	TOTAL
	Sec2103 ⁽⁵⁾	Sec2105 ⁽³⁾	Sec2106 ⁽³⁾	Sec2107 ⁽³⁾	Sec2107.5 ⁽⁴⁾			
ALAMEDA COUNTY								
ALAMEDA	744,824	503,161	280,640	764,269	7,500	2,300,394	2,049,902	4,350,297
ALBANY	201,139	135,878	79,290	206,390	5,000	627,697	553,573	1,181,270
BERKELEY	1,211,906	818,695	453,620	1,243,544	10,000	3,737,765	3,335,402	7,073,168
DUBLIN	707,401	477,880	266,781	725,869	7,500	2,185,431	1,946,906	4,132,337
EMERYVILLE	126,492	85,451	51,645	129,794	3,000	396,382	348,131	744,513
FREMONT	2,186,153	1,476,840	814,425	2,243,225	10,000	6,730,643	6,016,720	12,747,363
HAYWARD	1,558,386	1,052,757	581,937	1,599,070	10,000	4,802,149	4,288,983	9,091,133
LIVERMORE	833,808	563,273	313,594	855,575	7,500	2,573,750	2,294,802	4,868,552
NEWARK	450,817	304,546	171,757	462,586	6,000	1,395,705	1,240,735	2,636,440
OAKLAND	4,115,198	2,779,993	1,528,833	4,222,630	10,000	12,656,655	11,325,830	23,982,484
PIEDMONT	107,054	72,319	44,446	109,848	3,000	336,668	294,632	631,300
PLEASANTON	758,192	512,191	285,591	777,985	7,500	2,341,459	2,086,692	4,428,151
SAN LEANDRO	863,839	583,561	324,716	886,391	7,500	2,666,007	2,377,455	5,043,462
UNION CITY	665,921	449,858	251,419	683,306	7,500	2,058,005	1,832,746	3,890,750
ALPINE COUNTY								
AMADOR COUNTY								
AMADOR	1,900	1,284	5,737	1,950	1,000	11,871	5,230	17,100
IONE	84,138	56,839	46,298	86,334	2,000	275,610	231,564	507,174
JACKSON	47,798	32,290	28,375	49,046	2,000	159,508	131,549	291,057
PLYMOUTH	10,137	6,848	9,800	10,402	1,000	38,187	27,900	66,087
SUTTER CREEK	25,120	16,969	17,190	25,776	1,000	86,054	69,135	155,189
BUTTE COUNTY								
BIGGS	18,650	12,599	12,415	19,137	1,000	63,800	51,328	115,128
CHICO	1,041,169	703,355	429,934	1,068,350	10,000	3,252,809	2,865,502	6,118,310
GRIDLEY	69,602	47,019	33,220	71,419	2,000	223,260	191,558	414,818
OROVILLE	190,099	128,420	82,422	195,062	4,000	600,003	523,190	1,123,192
PARADISE	101,572	68,616	46,274	104,223	2,000	322,685	279,545	602,230
CALAVERAS COUNTY								
ANGELS CAMP	34,696	23,439	29,707	35,602	1,000	124,445	95,491	219,936
COLUSA COUNTY								
COLUSA	61,251	41,378	21,425	62,850	2,000	188,904	168,574	357,478
WILLIAMS	52,672	35,582	19,097	54,047	2,000	163,397	144,963	308,360

Local Streets and Roads - Projected FY2024-25 Revenues

Based on State Dept of Finance statewide revenue projections

Estimated May 2025

Estimated May 2025	Highway Users Tax Acct (HUTA) ⁽¹⁾ Streets & Highways Code					TOTAL HUTA	Road Mntnc Rehab Acct	TOTAL
	Sec2103 ⁽⁵⁾	Sec2105 ⁽³⁾	Sec2106 ⁽³⁾	Sec2107 ⁽³⁾	Sec2107.5 ⁽⁴⁾			
CONTRA COSTA COUNTY								
ANTIOCH	1,098,582	742,139	440,081	1,127,262	10,000	3,418,065	3,023,512	6,441,577
BRENTWOOD	615,748	415,964	248,772	631,823	7,500	1,919,808	1,694,659	3,614,468
CLAYTON	105,115	71,010	46,449	107,860	3,000	333,434	289,298	622,732
CONCORD	1,192,525	805,602	477,303	1,223,657	10,000	3,709,087	3,282,061	6,991,148
DANVILLE	414,866	280,260	169,179	425,697	6,000	1,296,001	1,141,792	2,437,793
EL CERRITO	246,818	166,736	102,594	253,262	6,000	775,410	679,291	1,454,702
HERCULES	247,616	167,275	102,911	254,080	6,000	777,882	681,488	1,459,370
LAFAYETTE	241,555	163,181	100,509	247,861	6,000	759,105	664,806	1,423,911
MARTINEZ	356,646	240,930	146,111	365,956	6,000	1,115,642	981,559	2,097,201
MORAGA	164,390	111,053	69,935	168,682	4,000	518,059	452,434	970,493
OAKLEY	434,523	293,539	176,967	445,867	6,000	1,356,895	1,195,892	2,552,787
ORINDA	185,463	125,288	78,284	190,304	4,000	583,339	510,430	1,093,769
PINOLE	179,895	121,527	76,078	184,592	4,000	566,092	495,107	1,061,199
PITTSBURG	724,388	489,356	291,818	743,299	7,500	2,256,361	1,993,659	4,250,020
PLEASANT HILL	327,887	221,502	134,716	336,447	6,000	1,026,552	902,410	1,928,962
RICHMOND	1,101,128	743,859	441,090	1,129,874	10,000	3,425,952	3,030,520	6,456,472
SAN PABLO	305,969	206,695	126,031	313,957	6,000	958,653	842,087	1,800,740
SAN RAMON	803,748	542,966	323,262	824,730	7,500	2,502,206	2,212,070	4,714,276
WALNUT CREEK	667,954	451,232	269,458	685,392	7,500	2,081,536	1,838,341	3,919,877
DEL NORTE COUNTY								
CRESCENT CITY	63,959	43,207	25,049	65,628	2,000	199,842	176,026	375,869
EL DORADO COUNTY								
PLACERVILLE	102,797	69,444	71,198	105,481	3,000	351,920	282,918	634,838
SOUTH LAKE TAHOE	203,542	137,502	136,270	208,856	5,000	691,170	560,189	1,251,359

Local Streets and Roads - Projected FY2024-25 Revenues

Based on State Dept of Finance statewide revenue projections

Estimated May 2025

Estimated May 2025	Highway Users Tax Acct (HUTA) ⁽¹⁾ Streets & Highways Code					TOTAL HUTA	Road Mntnc Rehab Acct	TOTAL
	Sec2103 ⁽⁵⁾	Sec2105 ⁽³⁾	Sec2106 ⁽³⁾	Sec2107 ⁽³⁾	Sec2107.5 ⁽⁴⁾			
FRESNO COUNTY								
CLOVIS	1,198,349	809,536	412,925	1,229,633	10,000	3,660,443	3,298,090	6,958,532
COALINGA	171,373	115,770	63,165	175,847	4,000	530,155	471,652	1,001,808
FIREBAUGH	79,948	54,008	32,028	82,035	2,000	250,020	220,033	470,053
FOWLER	69,991	47,282	28,637	71,819	2,000	219,730	192,630	412,360
FRESNO	5,196,594	3,510,522	1,774,620	5,332,257	20,000	15,833,993	14,302,041	30,136,034
HURON	60,310	40,742	25,340	61,885	2,000	190,277	165,986	356,263
KERMAN	163,944	110,751	60,635	168,224	4,000	507,553	451,205	958,758
KINGSBURG	123,908	83,705	47,000	127,143	3,000	384,755	341,018	725,774
MENDOTA	119,566	80,772	45,521	122,687	3,000	371,546	329,069	700,615
ORANGE COVE	91,368	61,723	35,917	93,753	2,000	284,762	251,463	536,224
PARLIER	138,396	93,493	51,934	142,009	3,000	428,832	380,894	809,726
REEDLEY	243,721	164,644	87,805	250,083	6,000	752,253	670,767	1,423,020
SANGER	252,461	170,549	90,782	259,052	6,000	778,844	694,823	1,473,667
SAN JOAQUIN	35,133	23,734	16,766	36,051	1,000	112,684	96,694	209,378
SELMA	234,790	158,611	84,763	240,920	5,000	724,084	646,188	1,370,272
GLENN COUNTY								
ORLAND	81,107	54,791	30,986	83,225	2,000	252,109	223,223	475,332
WILLOWS	60,757	41,044	24,415	62,343	2,000	190,559	167,215	357,774
HUMBOLDT COUNTY								
ARCATA	176,209	119,037	80,570	180,809	4,000	560,625	484,962	1,045,587
BLUE LAKE	11,448	7,734	9,723	11,747	1,000	41,652	31,508	73,160
EUREKA	256,252	173,109	114,989	262,942	6,000	813,292	705,256	1,518,549
FERNDALE	13,244	8,947	10,495	13,590	1,000	47,275	36,450	83,725
FORTUNA	119,043	80,419	55,989	122,151	3,000	380,603	327,631	708,233
RIO DELL	32,207	21,757	18,649	33,048	1,000	106,662	88,641	195,303
TRINIDAD	2,917	1,970	6,054	2,993	1,000	14,934	8,027	22,961
IMPERIAL COUNTY								
BRAWLEY	269,297	181,921	113,301	276,327	6,000	846,846	741,157	1,588,003
CALEXICO	373,016	251,988	155,090	382,754	6,000	1,168,847	1,026,612	2,195,459
CALIPATRIA	62,077	41,936	29,811	63,698	2,000	199,523	170,849	370,372
EL CENTRO	427,074	288,507	176,871	438,224	6,000	1,336,676	1,175,392	2,512,068
HOLTVILLE	53,042	35,832	26,171	54,427	2,000	171,473	145,983	317,455
IMPERIAL	210,354	142,103	89,553	215,846	5,000	662,857	578,937	1,241,794
WESTMORLAND	19,476	13,157	12,647	19,985	1,000	66,266	53,603	119,868
INYO COUNTY								
BISHOP	36,625	24,742	20,308	37,581	1,000	120,257	100,799	221,056

Local Streets and Roads - Projected FY2024-25 Revenues

Based on State Dept of Finance statewide revenue projections

Estimated May 2025

Estimated May 2025	Highway Users Tax Acct (HUTA) ⁽¹⁾ Streets & Highways Code					TOTAL HUTA	Road Mntnc Rehab Acct	TOTAL
	Sec2103 ⁽⁵⁾	Sec2105 ⁽³⁾	Sec2106 ⁽³⁾	Sec2107 ⁽³⁾	Sec2107.5 ⁽⁴⁾			
KERN COUNTY								
ARVIN	187,743	126,828	56,973	192,644	4,000	568,189	516,705	1,084,894
BAKERSFIELD	3,905,813	2,638,544	1,090,220	4,007,779	10,000	11,652,356	10,749,560	22,401,916
CALIFORNIA CITY	142,681	96,387	44,451	146,406	4,000	433,925	392,686	826,612
DELANO	498,633	336,848	143,370	511,651	7,500	1,498,002	1,372,337	2,870,339
MARICOPA	9,748	6,585	7,509	10,002	1,000	34,844	26,828	61,671
MCFARLAND	134,758	91,035	42,249	138,276	3,000	409,317	370,879	780,196
RIDGECREST	265,449	179,322	78,568	272,379	6,000	801,718	730,567	1,532,285
SHAFTER	211,162	142,649	63,482	216,675	5,000	638,967	581,159	1,220,126
TAFT	81,430	55,010	27,429	83,556	2,000	249,425	224,112	473,537
TEHACHAPI	123,898	83,699	39,231	127,133	3,000	376,961	340,992	717,953
WASCO	257,592	174,014	76,384	264,317	6,000	778,307	708,943	1,487,250
KINGS COUNTY								
AVENAL	132,829	89,732	42,214	136,297	3,000	404,071	365,571	769,642
CORCORAN	205,528	138,843	62,691	210,894	5,000	622,956	565,653	1,188,609
HANFORD	563,257	380,504	163,453	577,961	7,500	1,692,675	1,550,193	3,242,869
LEMOORE	256,822	173,494	77,139	263,527	6,000	776,983	706,825	1,483,808
LAKE COUNTY								
CLEARLAKE	160,276	108,274	61,399	164,461	4,000	498,410	441,112	939,522
LAKEPORT	47,332	31,975	21,515	48,568	1,000	150,390	130,268	280,658
LASSEN COUNTY								
SUSANVILLE	154,224	104,185	49,355	158,251	4,000	470,015	424,456	894,471
LOS ANGELES COUNTY								
AGOURA HILLS	192,218	129,851	77,406	197,236	5,000	601,710	529,021	1,130,731
ALHAMBRA	784,955	530,271	301,299	805,447	7,500	2,429,472	2,160,350	4,589,823
ARCADIA	540,370	365,043	208,912	554,477	7,500	1,676,302	1,487,203	3,163,506
ARTESIA	155,783	105,238	63,643	159,849	4,000	488,513	428,744	917,257
AVALON	32,711	22,098	17,156	33,565	1,000	106,529	90,027	196,556
AZUSA	477,399	322,504	185,127	489,862	7,500	1,482,392	1,313,896	2,796,289
BALDWIN PARK	684,391	462,335	263,313	702,257	7,500	2,119,796	1,883,577	4,003,373
BELL	324,296	219,076	127,295	332,762	6,000	1,009,429	892,526	1,901,955
BELLFLOWER	749,185	506,107	287,787	768,744	7,500	2,319,323	2,061,904	4,381,227
BELL GARDENS	375,191	253,458	146,520	384,986	6,000	1,166,155	1,032,599	2,198,754
BEVERLY HILLS	310,663	209,866	122,146	318,773	6,000	967,447	855,004	1,822,451
BRADBURY	8,741	5,905	8,102	8,969	1,000	32,716	24,056	56,772
BURBANK	1,018,197	687,836	389,400	1,044,778	10,000	3,150,211	2,802,277	5,952,487
CALABASAS	220,653	149,061	88,147	226,414	5,000	689,274	607,281	1,296,555
CARSON	891,306	602,115	341,470	914,574	7,500	2,756,966	2,453,048	5,210,013
CERRITOS	468,963	316,805	181,940	481,206	6,000	1,454,913	1,290,677	2,745,590
CLAREMONT	364,199	246,032	142,368	373,707	6,000	1,132,305	1,002,346	2,134,652
COMMERCE	117,571	79,424	49,210	120,640	3,000	369,845	323,578	693,423
COMPTON	912,929	616,723	349,638	936,762	7,500	2,823,553	2,512,560	5,336,113
COVINA	487,385	329,249	188,898	500,108	7,500	1,513,140	1,341,378	2,854,518

Local Streets and Roads - Projected FY2024-25 Revenues

Based on State Dept of Finance statewide revenue projections

Estimated May 2025

	Highway Users Tax Acct (HUTA) ⁽¹⁾ Streets & Highways Code					TOTAL HUTA	Road Mntnc Rehab Acct	TOTAL
	Sec2103 ⁽⁵⁾	Sec2105 ⁽³⁾	Sec2106 ⁽³⁾	Sec2107 ⁽³⁾	Sec2107.5 ⁽⁴⁾			
CUDAHY	216,359	146,160	86,525	222,007	5,000	676,050	595,462	1,271,512
CULVER CITY	384,160	259,516	149,907	394,189	6,000	1,193,772	1,057,283	2,251,055
DIAMOND BAR	522,110	352,707	202,015	535,740	7,500	1,620,072	1,436,948	3,057,019
DOWNEY	1,082,298	731,139	413,613	1,110,553	10,000	3,347,602	2,978,695	6,326,297
DUARTE	224,748	151,827	89,693	230,615	5,000	701,883	618,550	1,320,434
EL MONTE	1,036,980	700,524	396,495	1,064,051	10,000	3,208,050	2,853,971	6,062,021
EL SEGUNDO	164,485	111,117	66,930	168,779	4,000	515,312	452,695	968,007
GARDENA	578,639	390,895	223,367	593,745	7,500	1,794,146	1,592,526	3,386,672
GLENDALE	1,861,163	1,257,296	707,811	1,909,751	10,000	5,746,021	5,122,285	10,868,306
GLENORA	498,823	336,977	193,219	511,846	7,500	1,548,365	1,372,860	2,921,224
HAWAIIAN GARDENS	132,496	89,507	54,847	135,955	3,000	415,806	364,656	780,462
HAWTHORNE	835,974	564,736	320,570	857,798	7,500	2,586,578	2,300,763	4,887,341
HERMOSA BEACH	187,258	126,501	75,532	192,147	4,000	585,439	515,371	1,100,810
HIDDEN HILLS	16,408	11,084	10,998	16,836	1,000	56,325	45,157	101,482
HUNTINGTON PARK	519,820	351,161	201,150	533,390	7,500	1,613,021	1,430,646	3,043,667
INDUSTRY	4,095	2,766	6,347	4,202	1,000	18,409	11,270	29,679
INGLEWOOD	1,030,928	696,436	394,209	1,057,841	10,000	3,189,414	2,837,315	6,026,729
IRVINDALE	14,251	9,627	10,183	14,623	1,000	49,684	39,222	88,906
LA CANADA FLINTRIDGE	195,153	131,834	78,515	200,248	5,000	610,751	537,100	1,147,851
LA HABRA HEIGHTS	53,717	36,288	25,090	55,119	2,000	172,214	147,839	320,053
LAKEWOOD	781,839	528,166	300,122	802,250	7,500	2,419,876	2,151,774	4,571,650
LA MIRADA	468,469	316,471	181,753	480,699	6,000	1,453,392	1,289,318	2,742,709
LANCASTER	1,663,350	1,123,664	633,092	1,706,773	10,000	5,136,879	4,577,863	9,714,742
LA PUENTE	361,102	243,940	141,198	370,529	6,000	1,122,768	993,822	2,116,590
LA VERNE	308,107	208,139	121,180	316,150	6,000	959,577	847,970	1,807,547
LAWDALE	301,912	203,955	118,840	309,794	6,000	940,502	830,922	1,771,424
LOMITA	198,859	134,338	79,914	204,050	5,000	622,160	547,298	1,169,458
LONG BEACH	4,411,011	2,979,828	1,670,957	4,526,166	10,000	13,597,962	12,139,965	25,737,927
LOS ANGELES	37,038,724	25,021,248	13,995,320	38,005,662	20,000	114,080,954	101,937,802	216,018,756
LYNWOOD	651,290	439,975	250,810	668,293	7,500	2,017,868	1,792,478	3,810,346
MALIBU	101,999	68,905	43,328	104,662	3,000	321,894	280,722	602,616
MANHATTAN BEACH	336,913	227,599	132,061	345,708	6,000	1,048,282	927,250	1,975,532
MAYWOOD	238,733	161,274	94,976	244,965	6,000	745,949	657,040	1,402,988
MONROVIA	361,852	244,447	141,481	371,299	6,000	1,125,079	995,888	2,120,967
MONTEBELLO	595,274	402,133	229,651	610,815	7,500	1,845,373	1,638,311	3,483,684
MONTEREY PARK	580,368	392,063	224,020	595,519	7,500	1,799,470	1,597,285	3,396,756
NORWALK	982,503	663,723	375,918	1,008,152	10,000	3,040,296	2,704,040	5,744,335
PALMDALE	1,608,284	1,086,465	612,292	1,650,270	10,000	4,967,310	4,426,311	9,393,621
PALOS VERDES ESTATES	126,853	85,695	52,716	130,165	3,000	398,428	349,124	747,552
PARAMOUNT	507,973	343,157	196,675	521,234	7,500	1,576,539	1,398,040	2,974,578
PASADENA	1,330,076	898,523	507,205	1,364,799	10,000	4,110,602	3,660,628	7,771,230
PICO RIVERA	590,296	398,770	227,771	605,706	7,500	1,830,043	1,624,610	3,454,653
POMONA	1,451,608	980,624	553,111	1,489,504	10,000	4,484,847	3,995,109	8,479,956

Local Streets and Roads - Projected FY2024-25 Revenues

Based on State Dept of Finance statewide revenue projections

Estimated May 2025

	Highway Users Tax Acct (HUTA) ⁽¹⁾ Streets & Highways Code					TOTAL HUTA	Road Mntnc Rehab Acct	TOTAL
	Sec2103 ⁽⁵⁾	Sec2105 ⁽³⁾	Sec2106 ⁽³⁾	Sec2107 ⁽³⁾	Sec2107.5 ⁽⁴⁾			
RANCHO PALOS VERDES	401,014	270,902	156,274	411,483	6,000	1,245,673	1,103,669	2,349,342
REDONDO BEACH	667,147	450,686	256,799	684,564	7,500	2,066,696	1,836,119	3,902,815
ROLLING HILLS								
ROLLING HILLS ESTATES	81,079	54,772	35,426	83,195	2,000	256,472	223,145	479,617
ROSEMEAD	485,380	327,895	188,141	498,051	7,500	1,506,967	1,335,861	2,842,828
SAN DIMAS	330,642	223,363	129,693	339,274	6,000	1,028,973	909,993	1,938,965
SAN FERNANDO	224,748	151,827	89,693	230,615	5,000	701,883	618,550	1,320,434
SAN GABRIEL	374,821	253,207	146,380	384,606	6,000	1,165,014	1,031,580	2,196,593
SAN MARINO	119,214	80,534	49,831	122,327	3,000	374,906	328,102	703,008
SANTA CLARITA	2,189,222	1,478,913	831,728	2,246,374	10,000	6,756,236	6,025,165	12,781,401
SANTA FE SPRINGS	178,309	120,455	72,152	182,964	4,000	557,879	490,740	1,048,620
SANTA MONICA	886,175	598,650	339,532	909,310	7,500	2,741,167	2,438,928	5,180,095
SIERRA MADRE	106,180	71,729	44,907	108,951	3,000	334,767	292,227	626,994
SIGNAL HILL	111,718	75,471	46,999	114,635	3,000	351,823	307,471	659,294
SOUTH EL MONTE	185,605	125,384	74,908	190,451	4,000	580,348	510,822	1,091,170
SOUTH GATE	880,988	595,145	337,573	903,987	7,500	2,725,194	2,424,651	5,149,845
SOUTH PASADENA	256,100	173,007	101,536	262,786	6,000	799,429	704,838	1,504,267
TEMPLE CITY	347,174	234,531	135,937	356,237	6,000	1,079,878	955,490	2,035,368
TORRANCE	1,394,889	942,307	531,687	1,431,304	10,000	4,310,188	3,839,007	8,149,195
VERNON	2,005	1,354	5,557	2,057	1,000	11,973	5,517	17,490
WALNUT	270,104	182,467	106,826	277,156	6,000	842,552	743,379	1,585,932
WEST COVINA	1,041,036	703,265	398,027	1,068,214	10,000	3,220,543	2,865,136	6,085,678
WEST HOLLYWOOD	339,051	229,043	132,869	347,902	6,000	1,054,864	933,133	1,987,998
WESTLAKE VILLAGE	77,383	52,276	34,030	79,403	2,000	245,091	212,973	458,064
WHITTIER	834,435	563,697	319,988	856,219	7,500	2,581,838	2,296,528	4,878,366

Local Streets and Roads - Projected FY2024-25 Revenues

Based on State Dept of Finance statewide revenue projections

Estimated May 2025

Estimated May 2025	Highway Users Tax Acct (HUTA) ⁽¹⁾ Streets & Highways Code					TOTAL HUTA	Road Mntnc Rehab Acct	TOTAL
	Sec2103 ⁽⁵⁾	Sec2105 ⁽³⁾	Sec2106 ⁽³⁾	Sec2107 ⁽³⁾	Sec2107.5 ⁽⁴⁾			
MADERA COUNTY								
CHOWCHILLA	183,078	123,677	50,357	187,857	4,000	548,970	503,866	1,052,836
MADERA	632,365	427,190	162,159	648,874	7,500	1,878,087	1,740,392	3,618,478
MARIN COUNTY								
BELVEDERE	20,179	13,632	13,303	20,706	1,000	68,821	55,538	124,358
CORTE MADERA	97,011	65,535	45,677	99,544	3,000	310,768	266,994	577,762
FAIRFAX	72,158	48,746	35,204	74,041	2,000	232,149	198,592	430,741
LARKSPUR	124,269	83,949	57,162	127,513	3,000	395,893	342,012	737,905
MILL VALLEY	134,254	90,694	61,370	137,759	3,000	427,077	369,493	796,570
NOVATO	505,113	341,225	217,635	518,299	7,500	1,589,773	1,390,169	2,979,943
ROSS	22,194	14,993	14,152	22,773	1,000	75,111	61,081	136,192
SAN ANSELMO	121,466	82,056	55,981	124,637	3,000	387,140	334,299	721,439
SAN RAFAEL	585,213	395,337	251,387	600,491	7,500	1,839,927	1,610,621	3,450,548
SAUSALITO	67,635	45,691	33,299	69,401	2,000	218,026	186,146	404,171
TIBURON	86,770	58,617	41,361	89,035	2,000	277,783	238,807	516,590
MARIPOSA COUNTY								
MENDOCINO COUNTY								
FORT BRAGG	68,205	46,076	33,467	69,986	2,000	219,733	187,714	407,448
POINT ARENA	4,370	2,952	6,637	4,484	1,000	19,444	12,028	31,472
UKIAH	157,730	106,554	71,094	161,848	4,000	501,225	434,104	935,330
WILLITS	47,000	31,750	24,554	48,227	1,000	152,531	129,353	281,884
MERCED COUNTY								
ATWATER	301,713	203,820	95,925	309,590	6,000	917,048	830,373	1,747,421
DOS PALOS	55,056	37,193	21,428	56,494	2,000	172,172	151,526	323,698
GUSTINE	57,755	39,016	22,243	59,262	2,000	180,276	158,952	339,228
LIVINGSTON	135,727	91,689	45,793	139,270	3,000	415,479	373,546	789,025
LOS BANOS	450,513	304,341	140,867	462,274	6,000	1,363,993	1,239,898	2,603,892
MERCED	872,514	589,420	268,322	895,291	7,500	2,633,047	2,401,328	5,034,375
MODOC COUNTY								
ALTURAS	25,842	17,457	14,268	26,516	1,000	85,083	71,122	156,205
MONO COUNTY								
MAMMOTH LAKES	68,595	46,339	64,973	70,386	2,000	252,293	188,786	441,079

Local Streets and Roads - Projected FY2024-25 Revenues

Based on State Dept of Finance statewide revenue projections

Estimated May 2025

Estimated May 2025	Highway Users Tax Acct (HUTA) ⁽¹⁾ Streets & Highways Code					TOTAL HUTA	Road Mntnc Rehab Acct	TOTAL
	Sec2103 ⁽⁵⁾	Sec2105 ⁽³⁾	Sec2106 ⁽³⁾	Sec2107 ⁽³⁾	Sec2107.5 ⁽⁴⁾			
MONTEREY COUNTY								
CARMEL-BY-THE-SEA	30,098	20,333	13,562	30,884	1,000	95,876	82,836	178,712
DEL REY OAKS	15,002	10,134	9,167	15,393	1,000	50,696	41,287	91,983
GONZALES	81,212	54,862	28,441	83,332	2,000	249,847	223,511	473,358
GREENFIELD	195,343	131,963	61,666	200,443	4,000	593,415	537,623	1,131,038
KING CITY	135,062	91,240	44,117	138,588	3,000	412,007	371,716	783,722
MARINA	215,618	145,659	67,568	221,247	5,000	655,092	593,422	1,248,514
MONTEREY	270,522	182,749	83,551	277,585	6,000	820,407	744,530	1,564,937
PACIFIC GROVE	142,301	96,131	46,225	146,016	3,000	433,673	391,640	825,313
SALINAS	1,539,461	1,039,972	452,949	1,579,650	10,000	4,622,032	4,236,897	8,858,929
SAND CITY	3,601	2,432	5,848	3,695	1,000	16,576	9,910	26,486
SEASIDE	310,967	210,071	95,325	319,085	6,000	941,447	855,841	1,797,288
SOLEDAD	261,744	176,819	80,996	268,577	6,000	794,135	720,370	1,514,504
NAPA COUNTY								
AMERICAN CANYON	206,716	139,645	68,938	212,112	5,000	632,412	568,922	1,201,334
CALISTOGA	49,755	33,612	20,238	51,054	2,000	156,658	136,936	293,594
NAPA	740,293	500,099	234,493	759,619	7,500	2,242,004	2,037,430	4,279,434
SAINT HELENA	51,266	34,632	20,706	52,604	2,000	161,208	141,093	302,301
YOUNTVILLE	28,360	19,158	13,599	29,100	1,000	91,217	78,051	169,268
NEVADA COUNTY								
GRASS VALLEY	129,304	87,351	118,031	132,680	3,000	470,366	355,870	826,236
NEVADA CITY	31,808	21,488	32,654	32,639	1,000	119,589	87,543	207,132
TRUCKEE	159,402	107,683	144,388	163,564	4,000	579,037	438,706	1,017,744

Local Streets and Roads - Projected FY2024-25 Revenues

Based on State Dept of Finance statewide revenue projections

Estimated May 2025

Estimated May 2025	Highway Users Tax Acct (HUTA) ⁽¹⁾ Streets & Highways Code					TOTAL HUTA	Road Mntnc Rehab Acct	TOTAL
	Sec2103 ⁽⁵⁾	Sec2105 ⁽³⁾	Sec2106 ⁽³⁾	Sec2107 ⁽³⁾	Sec2107.5 ⁽⁴⁾			
ORANGE COUNTY								
ALISO VIEJO	492,078	332,420	215,349	504,924	7,500	1,552,271	1,354,295	2,906,565
ANAHEIM	3,290,644	2,222,971	1,412,790	3,376,550	10,000	10,312,956	9,056,496	19,369,452
BREA	453,420	306,304	198,808	465,257	6,000	1,429,789	1,247,900	2,677,688
BUENA PARK	800,061	540,476	347,128	820,948	7,500	2,516,113	2,201,925	4,718,038
COSTA MESA	1,068,816	722,031	462,122	1,096,719	10,000	3,359,689	2,941,592	6,301,280
CYPRESS	478,406	323,184	209,499	490,896	7,500	1,509,485	1,316,668	2,826,154
DANA POINT	314,843	212,690	139,514	323,062	6,000	996,109	866,509	1,862,618
FOUNTAIN VALLEY	542,736	366,641	237,024	556,904	7,500	1,710,805	1,493,714	3,204,519
FULLERTON	1,366,919	923,413	589,673	1,402,604	10,000	4,292,609	3,762,028	8,054,637
GARDEN GROVE	1,633,613	1,103,575	703,785	1,676,260	10,000	5,127,233	4,496,021	9,623,254
HUNTINGTON BEACH	1,884,221	1,272,872	811,015	1,933,411	10,000	5,911,520	5,185,745	11,097,265
IRVINE	2,988,437	2,018,818	1,283,483	3,066,454	10,000	9,367,192	8,224,763	17,591,955
LAGUNA BEACH	218,402	147,540	98,249	224,103	5,000	693,293	601,084	1,294,377
LAGUNA HILLS	298,027	201,330	132,319	305,807	6,000	943,482	820,228	1,763,710
LAGUNA NIGUEL	612,727	413,923	266,972	628,723	7,500	1,929,845	1,686,344	3,616,190
LAGUNA WOODS	168,580	113,883	76,931	172,981	4,000	536,375	463,965	1,000,340
LA HABRA	596,044	402,653	259,833	611,604	7,500	1,877,635	1,640,429	3,518,064
LAKE FOREST	825,770	557,843	358,128	847,328	7,500	2,596,569	2,272,681	4,869,250
LA PALMA	147,954	99,949	68,106	151,817	4,000	471,826	407,198	879,024
LOS ALAMITOS	113,505	76,677	53,366	116,468	3,000	363,015	312,387	675,402
MISSION VIEJO	889,263	600,735	385,295	912,478	7,500	2,795,272	2,447,426	5,242,698
NEWPORT BEACH	808,469	546,156	350,725	829,575	7,500	2,542,426	2,225,066	4,767,492
ORANGE	1,336,678	902,984	576,734	1,371,574	10,000	4,197,970	3,678,800	7,876,770
PLACENTIA	496,182	335,192	217,105	509,136	7,500	1,565,115	1,365,590	2,930,706
RANCHO SANTA MARGARITA	455,225	307,524	199,580	467,109	6,000	1,435,438	1,252,868	2,688,306
SAN CLEMENTE	609,022	411,420	265,386	624,921	7,500	1,918,249	1,676,147	3,594,396
SAN JUAN CAPISTRANO	332,448	224,583	147,047	341,127	6,000	1,051,203	914,961	1,966,164
SANTA ANA	2,952,781	1,994,731	1,268,227	3,029,867	10,000	9,255,605	8,126,631	17,382,236
SEAL BEACH	240,348	162,365	107,639	246,623	6,000	762,976	661,485	1,424,460
STANTON	382,849	258,631	168,612	392,843	6,000	1,208,935	1,053,674	2,262,609
TUSTIN	763,303	515,644	331,400	783,230	7,500	2,401,077	2,100,760	4,501,837
VILLA PARK	55,664	37,604	28,618	57,118	2,000	181,003	153,199	334,203
WESTMINSTER	863,934	583,625	374,457	886,488	7,500	2,716,005	2,377,716	5,093,721
YORBA LINDA	646,492	436,733	281,419	663,370	7,500	2,035,515	1,779,273	3,814,788

Local Streets and Roads - Projected FY2024-25 Revenues

Based on State Dept of Finance statewide revenue projections

Estimated May 2025

Estimated May 2025	Highway Users Tax Acct (HUTA) ⁽¹⁾ Streets & Highways Code					TOTAL HUTA	Road Mntnc Rehab Acct	TOTAL
	Sec2103 ⁽⁵⁾	Sec2105 ⁽³⁾	Sec2106 ⁽³⁾	Sec2107 ⁽³⁾	Sec2107.5 ⁽⁴⁾			
PLACER COUNTY								
AUBURN	130,796	88,358	60,017	134,210	3,000	416,382	359,976	776,357
COLFAX	18,992	12,830	12,818	19,488	1,000	65,127	52,269	117,396
LINCOLN	505,730	341,643	218,302	518,933	7,500	1,592,108	1,391,869	2,983,977
LOOMIS	64,671	43,688	32,102	66,359	2,000	208,820	177,987	386,808
ROCKLIN	680,334	459,595	292,013	698,095	7,500	2,137,536	1,872,412	4,009,948
ROSEVILLE	1,466,230	990,501	623,791	1,504,507	10,000	4,595,029	4,035,350	8,630,379
PLUMAS COUNTY								
PORTOLA	20,056	13,549	9,407	20,580	1,000	64,591	55,198	119,789
RIVERSIDE COUNTY								
BANNING	296,545	200,329	129,497	304,286	6,000	936,657	816,149	1,752,805
BEAUMONT	545,491	368,502	234,179	559,731	7,500	1,715,404	1,501,297	3,216,701
BLYTHE	178,404	120,519	79,819	183,061	4,000	565,803	491,002	1,056,805
CALIMESA	103,244	69,746	48,214	105,939	3,000	330,143	284,147	614,290
CANYON LAKE	105,077	70,984	48,985	107,821	3,000	335,868	289,194	625,061
CATHEDRAL CITY	487,565	329,371	209,822	500,294	7,500	1,534,551	1,341,875	2,876,426
COACHELLA	410,173	277,089	177,278	420,881	6,000	1,291,420	1,128,875	2,420,296
CORONA	1,488,471	1,005,526	630,703	1,527,329	10,000	4,662,029	4,096,562	8,758,591
DESERT HOT SPRINGS	310,235	209,577	135,254	318,334	6,000	979,400	853,827	1,833,228
EASTVALE	662,055	447,246	283,194	679,338	7,500	2,079,333	1,822,103	3,901,437
HEMET	851,859	575,467	363,007	874,098	7,500	2,671,932	2,344,482	5,016,414
INDIAN WELLS	45,575	30,788	23,964	46,765	1,000	148,091	125,431	273,522
INDIO	861,521	581,995	367,070	884,012	7,500	2,702,098	2,371,075	5,073,173
JURUPA VALLEY	995,680	672,625	423,484	1,021,674	10,000	3,123,463	2,740,307	5,863,769
LAKE ELSINORE	678,842	458,587	290,254	696,564	7,500	2,131,747	1,868,306	4,000,054
LA QUINTA	364,541	246,263	158,090	374,058	6,000	1,148,951	1,003,288	2,152,239
MENIFEE	1,059,895	716,005	450,487	1,087,565	10,000	3,323,952	2,917,039	6,240,991
MORENO VALLEY	1,976,796	1,335,411	836,044	2,028,402	10,000	6,186,653	5,440,529	11,627,182
MURRIETA	1,051,782	710,524	447,075	1,079,240	10,000	3,298,620	2,894,709	6,193,329
NORCO	252,984	170,902	111,180	259,588	6,000	800,654	696,261	1,496,915
PALM DESERT	483,480	326,611	208,104	496,102	7,500	1,521,797	1,330,631	2,852,428
PALM SPRINGS	419,635	283,482	181,257	430,590	6,000	1,320,964	1,154,918	2,475,883
PERRIS	753,508	509,027	321,651	773,179	7,500	2,364,865	2,073,801	4,438,666
RANCHO MIRAGE	161,435	109,057	72,684	165,650	4,000	512,826	444,302	957,128
RIVERSIDE	3,017,642	2,038,547	1,273,721	3,096,421	10,000	9,436,332	8,305,141	17,741,473
SAN JACINTO	511,051	345,237	219,697	524,392	7,500	1,607,877	1,406,512	3,014,389
TEMECULA	1,042,519	704,266	443,180	1,069,735	10,000	3,269,699	2,869,215	6,138,914
WILDOMAR	348,589	235,487	151,382	357,690	6,000	1,099,148	959,386	2,058,534

Local Streets and Roads - Projected FY2024-25 Revenues

Based on State Dept of Finance statewide revenue projections

Estimated May 2025

Estimated May 2025	Highway Users Tax Acct (HUTA) ⁽¹⁾ Streets & Highways Code					TOTAL	Road Mntnc	TOTAL
	Sec2103 ⁽⁵⁾	Sec2105 ⁽³⁾	Sec2106 ⁽³⁾	Sec2107 ⁽³⁾	Sec2107.5 ⁽⁴⁾	HUTA	Rehab Acct	
SACRAMENTO COUNTY								
CITRUS HEIGHTS	833,409	563,003	372,447	855,166	7,500	2,631,525	2,293,704	4,925,229
ELK GROVE	1,697,571	1,146,782	753,661	1,741,888	10,000	5,349,903	4,672,047	10,021,950
FOLSOM	836,278	564,942	373,713	858,110	7,500	2,640,543	2,301,600	4,942,143
GALT	244,975	165,491	112,868	251,370	6,000	780,704	674,219	1,454,923
ISLETON	7,553	5,102	8,132	7,750	1,000	29,538	20,787	50,325
RANCHO CORDOVA	780,091	526,985	348,927	800,456	7,500	2,463,959	2,146,963	4,610,922
SACRAMENTO	4,944,218	3,340,031	2,185,878	5,073,292	20,000	15,563,419	13,607,453	29,170,872
SAN BENITO COUNTY								
HOLLISTER	407,313	275,157	173,337	417,946	6,000	1,279,754	1,121,005	2,400,758
SAN JUAN BAUTISTA	19,799	13,375	12,993	20,316	1,000	67,484	54,492	121,975
SAN BERNARDINO COUNTY								
ADELANTO	347,915	235,031	146,643	356,997	6,000	1,092,586	957,529	2,050,115
APPLE VALLEY	721,263	487,244	298,854	740,092	7,500	2,254,953	1,985,056	4,240,009
BARSTOW	242,590	163,880	103,703	248,923	6,000	765,096	667,656	1,432,752
BIG BEAR LAKE	47,893	32,354	24,326	49,143	2,000	155,715	131,811	287,526
CHINO	879,620	594,221	363,416	902,583	7,500	2,747,340	2,420,886	5,168,226
CHINO HILLS	744,644	503,039	308,387	764,084	7,500	2,327,653	2,049,405	4,377,059
COLTON	510,728	345,019	213,021	524,061	7,500	1,600,328	1,405,623	3,005,950
FONTANA	2,035,263	1,374,908	834,564	2,088,396	10,000	6,343,131	5,601,442	11,944,573
GRAND TERRACE	124,706	84,244	55,642	127,961	3,000	395,553	343,215	738,768
HESPERIA	950,894	642,370	392,474	975,718	10,000	2,971,456	2,617,046	5,588,502
HIGHLAND	540,256	364,966	225,059	554,360	7,500	1,692,141	1,486,890	3,179,031
LOMA LINDA	237,184	160,228	101,499	243,376	6,000	748,287	652,778	1,401,065
MONTCLAIR	361,187	243,997	152,054	370,616	6,000	1,133,855	994,058	2,127,912
NEEDLES	46,781	31,603	23,872	48,003	1,000	151,259	128,751	280,011
ONTARIO	1,721,750	1,163,116	706,747	1,766,699	10,000	5,368,312	4,738,593	10,106,905
RANCHO CUCAMONGA	1,655,521	1,118,376	679,746	1,698,740	10,000	5,162,383	4,556,317	9,718,700
REDLANDS	694,015	468,837	287,746	712,133	7,500	2,170,230	1,910,064	4,080,294
RIALTO	988,194	667,567	407,681	1,013,992	10,000	3,087,433	2,719,702	5,807,135
SAN BERNARDINO	2,152,292	1,453,966	882,276	2,208,480	10,000	6,707,015	5,923,529	12,630,544
TWENTYNINE PALMS	268,651	181,485	114,327	275,664	6,000	846,127	739,379	1,585,506
UPLAND	749,261	506,158	310,269	768,822	7,500	2,342,010	2,062,113	4,404,123
VICTORVILLE	1,313,012	886,996	540,107	1,347,290	10,000	4,097,405	3,613,666	7,711,072
YUCAIPA	519,734	351,103	216,693	533,303	7,500	1,628,333	1,430,411	3,058,743
YUCCA VALLEY	206,801	139,703	89,112	212,200	5,000	652,816	569,157	1,221,973

Local Streets and Roads - Projected FY2024-25 Revenues

Based on State Dept of Finance statewide revenue projections

Estimated May 2025

Estimated May 2025	Highway Users Tax Acct (HUTA) ⁽¹⁾ Streets & Highways Code					TOTAL HUTA	Road Mntnc Rehab Acct	TOTAL
	Sec2103 ⁽⁵⁾	Sec2105 ⁽³⁾	Sec2106 ⁽³⁾	Sec2107 ⁽³⁾	Sec2107.5 ⁽⁴⁾			
SAN DIEGO COUNTY								
CARLSBAD	1,092,853	738,269	479,338	1,121,383	10,000	3,441,844	3,007,745	6,449,589
CHULA VISTA	2,643,534	1,785,821	1,152,673	2,712,547	10,000	8,304,575	7,275,523	15,580,098
CORONADO	223,304	150,851	101,763	229,133	5,000	710,052	614,576	1,324,627
DEL MAR	37,537	25,358	21,099	38,517	1,000	123,512	103,310	226,821
EL CAJON	1,010,121	682,380	443,414	1,036,492	10,000	3,182,407	2,780,051	5,962,458
ENCINITAS	584,349	394,753	258,535	599,604	7,500	1,844,740	1,608,241	3,452,981
ESCONDIDO	1,437,348	970,990	628,924	1,474,871	10,000	4,522,133	3,955,861	8,477,994
IMPERIAL BEACH	252,499	170,574	114,440	259,091	6,000	802,605	694,928	1,497,533
LA MESA	576,092	389,175	254,950	591,132	7,500	1,818,850	1,585,519	3,404,369
LEMON GROVE	261,915	176,935	118,528	268,752	6,000	832,130	720,840	1,552,970
NATIONAL CITY	557,148	376,377	246,724	571,693	7,500	1,759,443	1,533,380	3,292,823
OCEANSIDE	1,646,305	1,112,150	719,657	1,689,284	10,000	5,177,397	4,530,954	9,708,351
POWAY	468,127	316,240	208,070	480,348	6,000	1,478,784	1,288,376	2,767,160
SAN DIEGO	13,162,036	8,891,520	5,720,009	13,505,646	20,000	41,299,210	36,224,493	77,523,703
SAN MARCOS	912,046	616,126	400,828	935,856	7,500	2,872,356	2,510,128	5,382,484
SANTEE	566,753	382,866	250,895	581,549	7,500	1,789,564	1,559,816	3,349,379
SOLANA BEACH	122,853	82,993	58,145	126,060	3,000	393,052	338,116	731,168
VISTA	947,436	640,034	416,195	972,170	7,500	2,983,334	2,607,528	5,590,862
SAN FRANCISCO COUNTY								
SAN FRANCISCO	8,303,258	5,609,207	2,090,188	8,520,024	20,000	24,542,676	22,852,186	47,394,862
SAN JOAQUIN COUNTY								
ESCALON	70,723	47,776	33,550	72,569	2,000	226,618	194,644	421,262
LATHROP	351,839	237,682	147,826	361,024	6,000	1,104,370	968,328	2,072,698
LODI	631,719	426,753	261,600	648,211	7,500	1,975,783	1,738,614	3,714,397
MANTECA	863,773	583,516	355,933	886,323	7,500	2,697,044	2,377,272	5,074,315
MOUNTAIN HOUSE	224,121	151,403	96,565	206,382	5,000	683,471	616,825	1,300,296
RIPON	151,897	102,613	66,548	155,862	4,000	480,919	418,050	898,969
STOCKTON	3,042,971	2,055,658	1,241,799	3,122,411	10,000	9,472,839	8,374,851	17,847,690
TRACY	917,851	620,048	377,916	941,812	7,500	2,865,126	2,526,104	5,391,231
SAN LUIS OBISPO COUNTY								
ARROYO GRANDE	174,309	117,753	90,985	178,859	4,000	565,906	479,732	1,045,638
ATASCADERO	292,621	197,678	149,483	300,260	6,000	946,041	805,350	1,751,391
EL PASO DE ROBLES	298,160	201,420	152,221	305,943	6,000	963,744	820,594	1,784,338
GROVER BEACH	121,504	82,081	64,876	124,676	3,000	396,138	334,403	730,541
MORRO BAY	100,299	67,756	54,391	102,917	3,000	328,363	276,041	604,404
PISMO BEACH	76,518	51,691	42,634	78,516	2,000	251,360	210,594	461,953
SAN LUIS OBISPO	462,531	312,459	233,492	474,606	6,000	1,489,088	1,272,975	2,762,064

Local Streets and Roads - Projected FY2024-25 Revenues

Based on State Dept of Finance statewide revenue projections

Estimated May 2025

Estimated May 2025	Highway Users Tax Acct (HUTA) ⁽¹⁾ Streets & Highways Code					TOTAL HUTA	Road Mntnc Rehab Acct	TOTAL
	Sec2103 ⁽⁵⁾	Sec2105 ⁽³⁾	Sec2106 ⁽³⁾	Sec2107 ⁽³⁾	Sec2107.5 ⁽⁴⁾			
SAN MATEO COUNTY								
ATHERTON	68,234	46,095	33,826	70,015	2,000	220,170	187,793	407,962
BELMONT	267,216	180,516	118,470	274,192	6,000	846,394	735,431	1,581,824
BRISBANE	46,088	31,134	24,405	47,291	1,000	149,918	126,843	276,761
BURLINGAME	296,830	200,521	131,067	304,579	6,000	938,996	816,933	1,755,929
COLMA	14,080	9,512	10,789	14,448	1,000	49,829	38,751	88,580
DALY CITY	996,013	672,849	428,489	1,022,015	10,000	3,129,366	2,741,222	5,870,588
EAST PALO ALTO	285,343	192,762	126,181	292,792	6,000	903,078	785,320	1,688,399
FOSTER CITY	320,040	216,201	140,940	328,395	6,000	1,011,575	880,812	1,892,387
HALF MOON BAY	111,642	75,419	52,291	114,557	3,000	356,910	307,262	664,172
HILLSBOROUGH	108,051	72,993	50,763	110,872	3,000	345,680	297,378	643,058
MENLO PARK	324,401	219,146	142,795	332,869	6,000	1,025,212	892,814	1,918,025
MILLBRAE	221,565	149,677	99,051	227,349	5,000	702,642	609,791	1,312,433
PACIFICA	367,439	248,221	161,103	377,031	6,000	1,159,793	1,011,263	2,171,056
PORTOLA VALLEY	42,154	28,477	22,732	43,255	1,000	137,619	116,017	253,636
REDWOOD CITY	792,869	535,617	342,075	813,568	7,500	2,491,630	2,182,131	4,673,761
SAN BRUNO	418,039	282,403	182,628	428,953	6,000	1,318,023	1,150,526	2,468,549
SAN CARLOS	292,032	197,280	129,026	299,656	6,000	923,993	803,728	1,727,722
SAN MATEO	1,004,383	678,504	432,050	1,030,603	10,000	3,155,540	2,764,258	5,919,798
SOUTH SAN FRANCISCO	629,496	425,251	272,578	645,929	7,500	1,980,755	1,732,495	3,713,250
WOODSIDE	50,420	34,061	26,248	51,736	2,000	164,465	138,766	303,231
SANTA BARBARA COUNTY								
BUELLTON	48,871	33,015	21,480	50,147	2,000	155,514	134,504	290,018
CARPINTERIA	124,848	84,340	47,412	128,108	3,000	387,709	343,607	731,316
GOLETA	310,302	209,622	110,709	318,402	6,000	955,035	854,010	1,809,045
GUADALUPE	82,428	55,684	32,933	84,580	2,000	257,625	226,858	484,482
LOMPOC	423,208	285,895	149,245	434,256	6,000	1,298,603	1,164,750	2,463,353
SANTA BARBARA	830,435	560,994	288,236	852,114	7,500	2,539,280	2,285,519	4,824,799
SANTA MARIA	1,050,851	709,895	363,466	1,078,284	10,000	3,212,496	2,892,146	6,104,642
SOLVANG	55,237	37,315	23,653	56,679	2,000	174,884	152,023	326,907

Local Streets and Roads - Projected FY2024-25 Revenues

Based on State Dept of Finance statewide revenue projections

Estimated May 2025

Estimated May 2025	Highway Users Tax Acct (HUTA) ⁽¹⁾ Streets & Highways Code					TOTAL HUTA	Road Mntnc Rehab Acct	TOTAL
	Sec2103 ⁽⁵⁾	Sec2105 ⁽³⁾	Sec2106 ⁽³⁾	Sec2107 ⁽³⁾	Sec2107.5 ⁽⁴⁾			
SANTA CLARA COUNTY								
CAMPBELL	415,436	280,645	170,165	426,281	6,000	1,298,528	1,143,361	2,441,889
CUPERTINO	573,252	387,256	232,984	588,217	7,500	1,789,209	1,577,701	3,366,910
GILROY	579,855	391,717	235,613	594,992	7,500	1,809,677	1,595,873	3,405,550
LOS ALTOS	299,775	202,511	124,126	307,601	6,000	940,012	825,039	1,765,051
LOS ALTOS HILLS	80,528	54,400	36,854	82,630	2,000	256,412	221,628	478,040
LOS GATOS	317,750	214,654	131,281	326,045	6,000	995,730	874,510	1,870,241
MILPITAS	776,899	524,828	314,046	797,181	7,500	2,420,454	2,138,177	4,558,631
MONTE SERENO	34,031	22,990	18,346	34,920	1,000	111,287	93,661	204,948
MORGAN HILL	440,679	297,698	180,213	452,184	6,000	1,376,774	1,212,836	2,589,610
MOUNTAIN VIEW	822,141	555,391	332,055	843,604	7,500	2,560,691	2,262,692	4,823,384
PALO ALTO	648,450	438,056	262,917	665,378	7,500	2,022,300	1,784,660	3,806,960
SAN JOSE	9,618,978	6,498,032	3,833,658	9,870,092	20,000	29,840,759	26,473,305	56,314,064
SANTA CLARA	1,254,545	847,499	504,175	1,287,296	10,000	3,903,516	3,452,753	7,356,269
SARATOGA	295,385	199,546	122,379	303,097	6,000	926,407	812,959	1,739,365
SUNNYVALE	1,496,983	1,011,277	600,678	1,536,064	10,000	4,655,002	4,119,991	8,774,992
SANTA CRUZ COUNTY								
CAPITOLA	93,667	63,276	39,817	96,112	2,000	294,873	257,790	552,663
SANTA CRUZ	614,646	415,220	234,582	630,692	7,500	1,902,640	1,691,626	3,594,267
SCOTT'S VALLEY	114,664	77,460	47,666	117,657	3,000	360,447	315,577	676,024
WATSONVILLE	492,220	332,516	188,814	505,070	7,500	1,526,121	1,354,687	2,880,808
SHASTA COUNTY								
ANDERSON	106,132	71,697	59,569	108,903	3,000	349,301	292,096	641,397
REDDING	890,650	601,672	464,419	913,902	7,500	2,878,143	2,451,244	5,329,387
SHASTA LAKE	98,256	66,376	55,505	100,821	3,000	323,958	270,420	594,378
SIERRA COUNTY								
LOYALTON	7,011	4,737	6,419	7,195	1,000	26,361	19,297	45,658
SISKIYOU COUNTY								
DORRIS	8,152	5,507	8,924	8,364	1,000	31,947	22,435	54,381
DUNSMUIR	16,180	10,930	12,985	16,602	1,000	57,697	44,530	102,227
ETNA	6,498	4,390	8,088	6,668	1,000	26,644	17,885	44,529
FORT JONES	6,593	4,454	8,136	6,766	1,000	26,949	18,147	45,095
MONTAGUE	11,676	7,888	10,707	11,981	1,000	43,252	32,136	75,388
MOUNT SHASTA	30,792	20,801	20,378	31,596	1,000	104,566	84,745	189,311
TULELAKE	8,551	5,776	9,126	8,774	1,000	33,227	23,533	56,760
WEED	27,732	18,734	18,830	28,456	1,000	94,753	76,325	171,079
YREKA	74,153	50,093	42,315	76,089	2,000	244,649	204,083	448,732

Local Streets and Roads - Projected FY2024-25 Revenues

Based on State Dept of Finance statewide revenue projections

Estimated May 2025

Estimated May 2025	Highway Users Tax Acct (HUTA) ⁽¹⁾ Streets & Highways Code					TOTAL HUTA	Road Mntnc Rehab Acct	TOTAL
	Sec2103 ⁽⁵⁾	Sec2105 ⁽³⁾	Sec2106 ⁽³⁾	Sec2107 ⁽³⁾	Sec2107.5 ⁽⁴⁾			
SOLANO COUNTY								
BENICIA	257,297	173,815	112,913	264,014	6,000	814,040	708,132	1,522,172
DIXON	184,342	124,531	82,258	189,154	4,000	584,284	507,344	1,091,628
FAIRFIELD	1,144,328	773,043	485,632	1,174,202	10,000	3,587,204	3,149,414	6,736,618
RIO VISTA	95,045	64,207	44,737	97,526	2,000	303,514	261,582	565,096
SUISUN CITY	279,833	189,039	122,382	287,138	6,000	884,392	770,155	1,654,547
VACAVILLE	971,245	656,117	412,905	996,600	10,000	3,046,867	2,673,055	5,719,921
VALLEJO	1,196,477	808,272	507,545	1,227,712	10,000	3,750,006	3,292,938	7,042,944
SONOMA COUNTY								
CLOVERDALE	85,592	57,821	41,185	87,826	2,000	274,423	235,565	509,988
COTATI	72,025	48,656	35,418	73,905	2,000	232,003	198,226	430,229
HEALDSBURG	107,434	72,576	50,470	110,238	3,000	343,718	295,678	639,396
PETALUMA	568,406	383,983	246,429	583,245	7,500	1,789,564	1,564,365	3,353,929
ROHNERT PARK	418,714	282,859	182,795	429,645	6,000	1,320,013	1,152,382	2,472,395
SANTA ROSA	1,691,681	1,142,803	723,933	1,735,844	10,000	5,304,261	4,655,836	9,960,097
SEBASTOPOL	71,474	48,283	35,183	73,339	2,000	230,280	196,709	426,989
SONOMA	102,322	69,123	48,297	104,994	3,000	327,736	281,611	609,347
WINDSOR	249,079	168,264	110,684	255,582	6,000	789,608	685,515	1,475,123
STANISLAUS COUNTY								
CERES	477,219	322,382	191,123	489,677	6,000	1,486,401	1,313,400	2,799,800
HUGHSON	73,260	49,490	33,403	75,172	2,000	233,325	201,625	434,950
MODESTO	2,079,508	1,404,797	816,712	2,133,796	10,000	6,444,812	5,723,211	12,168,023
NEWMAN	117,390	79,302	50,633	120,455	3,000	370,781	323,081	693,862
OAKDALE	220,140	148,714	90,750	225,887	5,000	690,492	605,869	1,296,360
PATTERSON	235,522	159,105	96,756	241,670	5,000	738,053	648,202	1,386,255
RIVERBANK	237,574	160,491	97,557	243,776	5,000	744,398	653,850	1,398,248
TURLOCK	684,790	462,605	272,166	702,667	7,500	2,129,727	1,884,675	4,014,402
WATERFORD	86,551	58,469	38,593	88,811	2,000	274,423	238,206	512,629
SUTTER COUNTY								
LIVE OAK	91,853	62,050	39,252	94,250	2,000	289,405	252,796	542,201
YUBA CITY	667,479	450,911	255,157	684,905	7,500	2,065,952	1,837,034	3,902,986
TEHAMA COUNTY								
CORNING	78,115	52,770	34,396	80,154	2,000	247,434	214,986	462,420
RED BLUFF	140,686	95,039	58,103	144,359	3,000	441,187	387,195	828,382
TEHAMA	4,123	2,785	6,362	4,231	1,000	18,502	11,348	29,850
TRINITY COUNTY								

Local Streets and Roads - Projected FY2024-25 Revenues

Based on State Dept of Finance statewide revenue projections

Estimated May 2025

Estimated May 2025	Highway Users Tax Acct (HUTA) ⁽¹⁾ Streets & Highways Code					TOTAL HUTA	Road Mntnc Rehab Acct	TOTAL
	Sec2103 ⁽⁵⁾	Sec2105 ⁽³⁾	Sec2106 ⁽³⁾	Sec2107 ⁽³⁾	Sec2107.5 ⁽⁴⁾			
TULARE COUNTY								
DINUBA	242,961	164,130	93,706	249,304	6,000	756,101	668,675	1,424,776
EXETER	98,332	66,427	40,782	100,899	3,000	309,441	270,629	580,070
FARMERSVILLE	98,617	66,620	40,887	101,192	3,000	310,315	271,413	581,729
LINDSAY	120,583	81,459	48,925	123,731	3,000	377,696	331,867	709,563
PORTERVILLE	597,915	403,918	223,594	613,525	7,500	1,846,452	1,645,580	3,492,032
TULARE	672,638	454,396	250,938	690,198	7,500	2,075,670	1,851,232	3,926,902
VISALIA	1,373,152	927,623	507,275	1,408,999	10,000	4,227,049	3,779,181	8,006,230
WOODLAKE	73,279	49,503	31,615	75,192	2,000	231,588	201,677	433,265
TUOLUMNE COUNTY								
SONORA	49,432	33,393	32,864	50,722	2,000	168,412	136,047	304,459
VENTURA COUNTY								
CAMARILLO	672,391	454,229	291,838	689,945	7,500	2,115,903	1,850,552	3,966,455
FILLMORE	162,091	109,499	73,995	166,323	4,000	515,908	446,106	962,014
MOORPARK	344,114	232,464	151,699	353,098	6,000	1,087,376	947,070	2,034,446
OJAI	73,041	49,342	35,981	74,948	2,000	235,312	201,024	436,336
OXNARD	1,916,277	1,294,527	822,841	1,966,303	10,000	6,009,948	5,273,968	11,283,916
PORT HUENEME	209,632	141,616	94,290	215,105	5,000	665,643	576,949	1,242,593
SAN BUENAVENTURA	1,045,834	706,506	451,257	1,073,137	10,000	3,286,734	2,878,340	6,165,075
SANTA PAULA	297,894	201,240	131,968	305,671	6,000	942,772	819,862	1,762,634
SIMI VALLEY	1,198,976	809,960	516,632	1,230,276	10,000	3,765,843	3,299,815	7,065,659
THOUSAND OAKS	1,204,933	813,984	519,175	1,236,389	10,000	3,784,480	3,316,210	7,100,690
YOLO COUNTY								
DAVIS	619,881	418,756	279,855	636,064	7,500	1,962,056	1,706,034	3,668,089
WEST SACRAMENTO	515,678	348,362	233,617	529,140	7,500	1,634,297	1,419,246	3,053,543
WINTERS	72,082	48,694	36,784	73,963	2,000	233,523	198,383	431,906
WOODLAND	576,425	389,400	260,572	591,473	7,500	1,825,370	1,586,434	3,411,804
YUBA COUNTY								
MARYSVILLE	125,038	84,469	44,345	128,303	3,000	385,155	344,130	729,285
WHEATLAND	36,986	24,986	16,497	37,952	1,000	117,421	101,793	219,214
Statewide Total	\$315,561,000	\$213,175,000	\$126,379,004	\$296,968,000	\$2,715,000	\$954,798,004	\$868,485,500	\$1,823,283,504

Notes:

1. The Highway Users Tax is also known as the "Motor Vehicle Fuel Tax", the "Gasoline Excise Tax" and "Article XIX Revenues."
2. Rolling Hills has no public streets and is therefore not eligible for HUTA or RMRA allocations.
3. Str&HwysCode §§ 2103, 2105, 2106, 2107 and RMRA amounts are paid monthly. Includes special payments for snow removal.
4. Str&HwysCode § 2107.5 amounts are typically paid by the State Controller once per year in July.
5. Str&HwysCode § 2103 allocations replace the former Prop42 TCRF revenues. Previously adjusted annually by the BOE until July 2019.

Local Streets and Roads - Projected FY2025-26 Revenues

Based on State Dept of Finance statewide revenue projections

Estimated May 2025

Estimated May 2025	Highway Users Tax Acct (HUTA) ⁽¹⁾ Streets & Highways Code					TOTAL HUTA	Road Mntnc Rehab Acct	TOTAL	
	Sec2103 ⁽⁵⁾	Sec2105 ⁽³⁾	Sec2106 ⁽³⁾	Sec2107 ⁽³⁾	Sec2107.5 ⁽⁴⁾				
ALAMEDA COUNTY									
ALAMEDA	734,196	506,726	282,631	690,885	7,500	2,221,938	2,123,257	4,345,195	
ALBANY	198,269	136,841	79,828	186,573	5,000	606,510	573,383	1,179,892	
BERKELEY	1,194,612	824,496	456,859	1,124,141	10,000	3,610,109	3,454,759	7,064,867	
DUBLIN	697,307	481,266	268,671	656,172	7,500	2,110,916	2,016,576	4,127,492	
EMERYVILLE	124,687	86,056	51,983	117,332	3,000	383,058	360,588	743,647	
FREMONT	2,154,957	1,487,305	820,267	2,027,835	10,000	6,500,363	6,232,026	12,732,390	
HAYWARD	1,536,148	1,060,216	586,101	1,445,530	10,000	4,637,996	4,442,463	9,080,459	
LIVERMORE	821,909	567,264	315,823	773,425	7,500	2,485,921	2,376,921	4,862,841	
NEWARK	444,383	306,704	172,961	418,169	6,000	1,348,218	1,285,134	2,633,352	
OAKLAND	4,056,475	2,799,691	1,539,830	3,817,181	10,000	12,223,178	11,731,121	23,954,299	
PIEDMONT	105,526	72,832	44,733	99,301	3,000	325,391	305,176	630,567	
PLEASANTON	747,373	515,820	287,617	703,285	7,500	2,261,594	2,161,364	4,422,958	
SAN LEANDRO	851,513	587,696	327,025	801,281	7,500	2,575,014	2,462,531	5,037,545	
UNION CITY	656,419	453,046	253,199	617,696	7,500	1,987,859	1,898,330	3,886,189	
ALPINE COUNTY									
AMADOR COUNTY									
AMADOR	1,873	1,293	5,744	1,763	1,000	11,672	5,417	17,089	
IONE	82,937	57,242	46,598	78,045	2,000	266,822	239,851	506,672	
JACKSON	47,116	32,518	28,545	44,336	2,000	154,516	136,257	290,772	
PLYMOUTH	9,993	6,897	9,836	9,403	1,000	37,128	28,898	66,026	
SUTTER CREEK	24,761	17,090	17,279	23,301	1,000	83,431	71,609	155,039	
BUTTE COUNTY									
BIGGS	18,384	12,688	12,470	17,299	1,000	61,841	53,165	115,006	
CHICO	1,026,312	708,338	433,002	965,769	10,000	3,143,422	2,968,043	6,111,465	
GRIDLEY	68,609	47,352	33,425	64,561	2,000	215,948	198,413	414,361	
OROVILLE	187,386	129,330	82,982	176,332	4,000	580,031	541,912	1,121,942	
PARADISE	100,122	69,102	46,573	101,635	2,000	319,433	289,549	608,982	
CALAVERAS COUNTY									
ANGELS CAMP	34,201	23,605	29,887	32,184	1,000	120,877	98,909	219,786	
COLUSA COUNTY									
COLUSA	60,377	41,671	21,545	56,815	2,000	182,408	174,607	357,015	
WILLIAMS	51,920	35,834	19,200	48,857	2,000	157,811	150,150	307,962	

Local Streets and Roads - Projected FY2025-26 Revenues

Based on State Dept of Finance statewide revenue projections

Estimated May 2025

Estimated May 2025	Highway Users Tax Acct (HUTA) ⁽¹⁾ Streets & Highways Code					TOTAL HUTA	Road Mntnc Rehab Acct	TOTAL
	Sec2103 ⁽⁵⁾	Sec2105 ⁽³⁾	Sec2106 ⁽³⁾	Sec2107 ⁽³⁾	Sec2107.5 ⁽⁴⁾			
CONTRA COSTA COUNTY								
ANTIOCH	1,082,905	747,398	443,222	1,019,024	10,000	3,302,550	3,131,708	6,434,258
BRENTWOOD	606,962	418,912	250,533	571,157	7,500	1,855,063	1,755,302	3,610,365
CLAYTON	103,615	71,513	46,749	97,503	3,000	322,381	299,651	622,032
CONCORD	1,175,508	811,310	480,713	1,106,164	10,000	3,583,694	3,399,509	6,983,203
DANVILLE	408,946	282,246	170,365	384,822	6,000	1,252,378	1,182,651	2,435,029
EL CERRITO	243,296	167,918	103,300	228,944	6,000	749,458	703,600	1,453,057
HERCULES	244,083	168,461	103,619	229,684	6,000	751,846	705,875	1,457,721
LAFAYETTE	238,108	164,337	101,200	224,062	6,000	733,706	688,595	1,422,301
MARTINEZ	351,557	242,637	147,130	330,818	6,000	1,078,142	1,016,684	2,094,825
MORAGA	162,044	111,840	70,405	152,485	4,000	500,774	468,624	969,398
OAKLEY	428,322	295,619	178,209	403,055	6,000	1,311,206	1,238,686	2,549,892
ORINDA	182,816	126,176	78,814	172,032	4,000	563,838	528,695	1,092,533
PINOLE	177,328	122,388	76,593	166,868	4,000	547,176	512,824	1,060,001
PITTSBURG	714,052	492,823	293,889	671,929	7,500	2,180,193	2,065,001	4,245,194
PLEASANT HILL	323,208	223,071	135,653	304,142	6,000	992,075	934,702	1,926,778
RICHMOND	1,085,415	749,130	444,238	1,021,386	10,000	3,310,170	3,138,966	6,449,136
SAN PABLO	301,603	208,160	126,906	283,811	6,000	926,481	872,221	1,798,702
SAN RAMON	792,278	546,813	325,560	745,541	7,500	2,417,693	2,291,229	4,708,921
WALNUT CREEK	658,423	454,429	271,367	619,582	7,500	2,011,302	1,904,126	3,915,427
DEL NORTE COUNTY								
CRESCENT CITY	63,046	43,513	25,195	59,327	2,000	193,081	182,325	375,406
EL DORADO COUNTY								
PLACERVILLE	101,330	69,936	71,677	95,795	3,000	341,738	293,042	634,781
SOUTH LAKE TAHOE	200,638	138,476	137,219	1,621,622	5,000	2,102,955	580,235	2,683,190

Local Streets and Roads - Projected FY2025-26 Revenues

Based on State Dept of Finance statewide revenue projections

Estimated May 2025

Estimated May 2025	Highway Users Tax Acct (HUTA) ⁽¹⁾ Streets & Highways Code					TOTAL HUTA	Road Mntnc Rehab Acct	TOTAL
	Sec2103 ⁽⁵⁾	Sec2105 ⁽³⁾	Sec2106 ⁽³⁾	Sec2107 ⁽³⁾	Sec2107.5 ⁽⁴⁾			
FRESNO COUNTY								
CLOVIS	1,181,248	815,272	415,870	1,111,566	10,000	3,533,957	3,416,111	6,950,067
COALINGA	168,928	116,590	63,586	158,963	4,000	512,067	488,530	1,000,597
FIREBAUGH	78,807	54,391	32,225	74,158	2,000	241,582	227,907	469,488
FOWLER	68,993	47,617	28,809	64,923	2,000	212,342	199,523	411,865
FRESNO	5,122,439	3,535,397	1,787,391	4,820,263	20,000	15,285,490	14,813,835	30,099,326
HURON	59,450	41,031	25,488	55,943	2,000	183,912	171,925	355,837
KERMAN	161,604	111,536	61,038	152,071	4,000	490,249	467,351	957,600
KINGSBURG	122,140	84,298	47,304	114,935	3,000	371,677	353,222	724,898
MENDOTA	117,860	81,344	45,815	110,907	3,000	358,926	340,845	699,771
ORANGE COVE	90,064	62,160	36,142	84,751	2,000	275,118	260,461	535,579
PARLIER	136,421	94,155	52,274	128,374	3,000	414,225	394,524	808,749
REEDLEY	240,243	165,810	88,404	226,071	6,000	726,528	694,771	1,421,299
SANGER	248,859	171,757	91,402	234,179	6,000	752,196	719,687	1,471,884
SAN JOAQUIN	34,632	23,902	16,852	32,589	1,000	108,976	100,154	209,130
SELMA	231,440	159,735	85,340	217,787	5,000	699,302	669,312	1,368,614
GLENN COUNTY								
ORLAND	79,950	55,180	31,175	75,234	2,000	243,538	231,211	474,749
WILLOWS	59,890	41,335	24,557	56,357	2,000	184,138	173,198	357,337
HUMBOLDT COUNTY								
ARCATA	173,695	119,880	81,117	163,448	4,000	542,140	502,316	1,044,456
BLUE LAKE	11,285	7,789	9,758	10,619	1,000	40,451	32,635	73,087
EUREKA	252,596	174,336	115,784	237,695	6,000	786,410	730,494	1,516,904
FERNDALE	13,055	9,010	10,536	12,285	1,000	45,886	37,754	83,640
FORTUNA	117,345	80,989	56,358	110,422	3,000	368,114	339,355	707,469
RIO DELL	31,748	21,912	18,749	29,875	1,000	103,283	91,813	195,096
TRINIDAD	2,875	1,984	6,063	2,705	1,000	14,628	8,315	22,943
IMPERIAL COUNTY								
BRAWLEY	265,454	183,210	114,084	249,795	6,000	818,543	767,679	1,586,222
CALEXICO	367,693	253,774	156,175	346,002	6,000	1,129,643	1,063,349	2,192,992
CALIPATRIA	61,192	42,233	29,992	57,582	2,000	192,998	176,963	369,961
EL CENTRO	420,980	290,551	178,113	396,146	6,000	1,291,790	1,217,453	2,509,243
HOLTVILLE	52,285	36,086	26,325	49,201	2,000	165,898	151,207	317,105
IMPERIAL	207,353	143,110	90,165	195,121	5,000	640,749	599,654	1,240,402
WESTMORLAND	19,198	13,250	12,704	18,066	1,000	64,219	55,521	119,740
INYO COUNTY								
BISHOP	36,102	24,917	20,420	33,973	1,000	116,413	104,407	220,819

Local Streets and Roads - Projected FY2025-26 Revenues

Based on State Dept of Finance statewide revenue projections

Estimated May 2025

Estimated May 2025	Highway Users Tax Acct (HUTA) ⁽¹⁾ Streets & Highways Code					TOTAL HUTA	Road Mntnc Rehab Acct	TOTAL
	Sec2103 ⁽⁵⁾	Sec2105 ⁽³⁾	Sec2106 ⁽³⁾	Sec2107 ⁽³⁾	Sec2107.5 ⁽⁴⁾			
KERN COUNTY								
ARVIN	185,064	127,727	57,350	174,147	4,000	548,288	535,195	1,083,483
BAKERSFIELD	3,850,078	2,657,240	1,098,052	3,622,959	10,000	11,238,330	11,134,230	22,372,560
CALIFORNIA CITY	140,645	97,070	44,737	132,348	4,000	418,801	406,739	825,539
DELANO	491,518	339,235	144,369	462,523	7,500	1,445,146	1,421,445	2,866,591
MARICOPA	9,609	6,632	7,528	9,042	1,000	33,810	27,788	61,598
MCFARLAND	132,835	91,680	42,519	124,999	3,000	395,032	384,151	779,183
RIDGECREST	261,661	180,593	79,100	246,225	6,000	773,579	756,710	1,530,290
SHAFTER	208,149	143,660	63,905	195,870	5,000	616,584	601,956	1,218,539
TAFT	80,268	55,399	27,593	75,533	2,000	240,794	232,132	472,925
TEHACHAPI	122,130	84,292	39,480	114,926	3,000	363,827	353,195	717,022
WASCO	253,916	175,247	76,901	238,937	6,000	751,002	734,312	1,485,314
KINGS COUNTY								
AVENAL	130,933	90,367	42,484	123,210	3,000	389,994	378,653	768,648
CORCORAN	202,595	139,827	63,109	190,644	5,000	601,175	585,895	1,187,070
HANFORD	555,219	383,200	164,597	522,467	7,500	1,632,984	1,605,667	3,238,651
LEMOORE	253,157	174,724	77,661	238,224	6,000	749,766	732,119	1,481,884
LAKE COUNTY								
CLEARLAKE	157,989	109,041	61,808	148,669	4,000	481,507	456,897	938,404
LAKEPORT	46,657	32,202	21,635	43,905	1,000	145,398	134,930	280,328
LASSEN COUNTY								
SUSANVILLE	152,024	104,923	49,676	171,950	4,000	482,573	439,645	922,218
LOS ANGELES COUNTY								
AGOURA HILLS	189,475	130,771	77,930	178,298	5,000	581,473	547,951	1,129,425
ALHAMBRA	773,754	534,028	303,438	728,110	7,500	2,346,831	2,237,658	4,584,488
ARCADIA	532,659	367,630	210,385	501,237	7,500	1,619,411	1,540,423	3,159,833
ARTESIA	153,560	105,983	64,068	144,501	4,000	472,112	444,087	916,198
AVALON	32,244	22,254	17,245	30,342	1,000	103,085	93,248	196,333
AZUSA	470,587	324,789	186,428	442,827	7,500	1,432,131	1,360,914	2,793,044
BALDWIN PARK	674,624	465,611	265,178	634,828	7,500	2,047,742	1,950,980	3,998,722
BELL	319,668	220,628	128,179	300,811	6,000	975,287	924,465	1,899,752
BELLFLOWER	738,494	509,693	289,829	694,930	7,500	2,240,447	2,135,689	4,376,136
BELL GARDENS	369,837	255,254	147,542	348,020	6,000	1,126,654	1,069,551	2,196,204
BEVERLY HILLS	306,229	211,353	122,992	288,165	6,000	934,740	885,600	1,820,340
BRADBURY	8,616	5,947	8,125	8,108	1,000	31,795	24,917	56,712
BURBANK	1,003,667	692,709	392,176	944,460	10,000	3,043,013	2,902,555	5,945,568
CALABASAS	217,504	150,117	88,748	204,674	5,000	666,043	629,012	1,295,055
CARSON	878,587	606,382	343,900	826,759	7,500	2,663,127	2,540,829	5,203,956
CERRITOS	462,271	319,049	183,218	435,001	6,000	1,405,539	1,336,864	2,742,403
CLAREMONT	359,002	247,775	143,360	337,824	6,000	1,093,962	1,038,215	2,132,177

Local Streets and Roads - Projected FY2025-26 Revenues

Based on State Dept of Finance statewide revenue projections

Estimated May 2025

	Highway Users Tax Acct (HUTA) ⁽¹⁾ Streets & Highways Code					TOTAL HUTA	Road Mntnc Rehab Acct	TOTAL
	Sec2103 ⁽⁵⁾	Sec2105 ⁽³⁾	Sec2106 ⁽³⁾	Sec2107 ⁽³⁾	Sec2107.5 ⁽⁴⁾			
COMMERCE	115,893	79,987	49,530	109,057	3,000	357,467	335,157	692,624
COMPTON	899,902	621,093	352,126	846,816	7,500	2,727,437	2,602,471	5,329,909
COVINA	480,430	331,582	190,227	452,089	7,500	1,461,828	1,389,379	2,851,206
CUDAHY	213,271	147,195	87,114	200,690	5,000	653,272	616,770	1,270,042
CULVER CITY	378,678	261,355	150,955	356,339	6,000	1,153,327	1,095,117	2,248,445
DIAMOND BAR	514,659	355,207	203,438	484,299	7,500	1,565,103	1,488,368	3,053,471
DOWNEY	1,066,854	736,319	416,563	1,003,919	10,000	3,233,655	3,085,287	6,318,942
DUARTE	221,541	152,903	90,306	208,472	5,000	678,222	640,685	1,318,906
EL MONTE	1,022,182	705,488	399,322	961,883	10,000	3,098,875	2,956,099	6,054,974
EL SEGUNDO	162,138	111,904	67,379	152,573	4,000	497,994	468,895	966,889
GARDENA	570,382	393,665	224,945	536,734	7,500	1,733,225	1,649,515	3,382,740
GLENDALE	1,834,605	1,266,205	712,884	1,726,380	10,000	5,550,074	5,305,584	10,855,658
GLENDORA	491,705	339,364	194,579	462,699	7,500	1,495,848	1,421,987	2,917,835
HAWAIIAN GARDENS	130,606	90,141	55,209	122,901	3,000	401,857	377,705	779,562
HAWTHORNE	824,045	568,738	322,848	775,434	7,500	2,498,565	2,383,096	4,881,660
HERMOSA BEACH	184,586	127,397	76,043	173,697	4,000	565,724	533,814	1,099,538
HIDDEN HILLS	16,174	11,163	11,042	15,219	1,000	54,598	46,773	101,371
HUNTINGTON PARK	512,402	353,649	202,567	482,175	7,500	1,558,293	1,481,841	3,040,134
INDUSTRY	4,036	2,786	6,358	3,798	1,000	17,978	11,673	29,651
INGLEWOOD	1,016,217	701,371	397,019	956,269	10,000	3,080,876	2,938,847	6,019,723
IRWINDALE	14,048	9,695	10,222	13,219	1,000	48,184	40,625	88,809
LA CANADA FLINTRIDGE	192,369	132,769	79,047	181,021	5,000	590,204	556,320	1,146,525
LA HABRA HEIGHTS	52,950	36,545	25,237	49,827	2,000	166,559	153,130	319,688
LAKEWOOD	770,682	531,908	302,253	725,219	7,500	2,337,563	2,228,774	4,566,337
LA MIRADA	461,784	318,713	183,030	434,543	6,000	1,404,070	1,335,455	2,739,526
LANCASTER	1,639,614	1,131,626	637,626	1,542,892	10,000	4,961,758	4,741,681	9,703,438
LA PUENTE	355,949	245,668	142,182	334,951	6,000	1,084,750	1,029,386	2,114,136
LA VERNE	303,710	209,614	122,020	285,794	6,000	927,139	878,315	1,805,453
LAWNDALE	297,604	205,400	119,663	280,048	6,000	908,716	860,656	1,769,372
LOMITA	196,021	135,289	80,456	184,458	5,000	601,224	566,883	1,168,107
LONG BEACH	4,348,067	3,000,942	1,682,980	4,091,572	10,000	13,133,561	12,574,390	25,707,951
LOS ANGELES	36,510,188	25,198,542	14,096,275	34,356,429	20,000	110,181,434	105,585,616	215,767,050
LYNWOOD	641,996	443,092	252,585	604,125	7,500	1,949,298	1,856,621	3,805,920
MALIBU	100,544	69,393	43,606	94,613	3,000	311,155	290,767	601,923
MANHATTAN BEACH	332,105	229,212	132,979	312,514	6,000	1,012,811	960,432	1,973,242
MAYWOOD	235,326	162,417	95,627	221,444	6,000	720,814	680,552	1,401,366
MONROVIA	356,689	246,179	142,468	335,647	6,000	1,086,982	1,031,526	2,118,508
MONTEBELLO	586,780	404,983	231,274	552,165	7,500	1,782,702	1,696,938	3,479,639
MONTEREY PARK	572,086	394,841	225,602	538,338	7,500	1,738,368	1,654,444	3,392,812
NORWALK	968,483	668,426	378,596	911,351	10,000	2,936,855	2,800,803	5,737,658

Local Streets and Roads - Projected FY2025-26 Revenues

Based on State Dept of Finance statewide revenue projections

Estimated May 2025

	Highway Users Tax Acct (HUTA) ⁽¹⁾ Streets & Highways Code					TOTAL HUTA	Road Mntnc Rehab Acct	TOTAL
	Sec2103 ⁽⁵⁾	Sec2105 ⁽³⁾	Sec2106 ⁽³⁾	Sec2107 ⁽³⁾	Sec2107.5 ⁽⁴⁾			
PALMDALE	1,585,334	1,094,163	616,676	1,491,814	10,000	4,797,987	4,584,705	9,382,692
PALOS VERDES ESTATES	125,043	86,302	53,062	117,666	3,000	385,073	361,618	746,690
PARAMOUNT	500,724	345,589	198,059	471,186	7,500	1,523,058	1,448,068	2,971,126
PASADENA	1,311,096	904,890	510,831	1,233,753	10,000	3,970,569	3,791,622	7,762,191
PICO RIVERA	581,873	401,596	229,380	547,548	7,500	1,767,895	1,682,746	3,450,641
POMONA	1,430,894	987,572	557,068	1,346,485	10,000	4,332,019	4,138,073	8,470,092
RANCHO PALOS VERDES	395,292	272,822	157,367	371,973	6,000	1,203,453	1,143,163	2,346,616
REDONDO BEACH	657,627	453,880	258,618	618,833	7,500	1,996,457	1,901,824	3,898,281
ROLLING HILLS ⁽²⁾								
ROLLING HILLS ESTATES	79,922	55,160	35,647	75,207	2,000	247,936	231,130	479,066
ROSEMEAD	478,454	330,218	189,464	450,229	7,500	1,455,866	1,383,664	2,839,529
SAN DIMAS	325,924	224,946	130,594	306,698	6,000	994,162	942,557	1,936,718
SAN FERNANDO	221,541	152,903	90,306	208,472	5,000	678,222	640,685	1,318,906
SAN GABRIEL	369,472	255,002	147,401	347,677	6,000	1,125,552	1,068,494	2,194,046
SAN MARINO	117,513	81,105	50,155	110,581	3,000	362,355	339,843	702,198
SANTA CLARITA	2,157,982	1,489,392	837,695	2,030,681	10,000	6,525,750	6,240,774	12,766,524
SANTA FE SPRINGS	175,764	121,309	72,638	165,396	4,000	539,107	508,301	1,047,408
SANTA MONICA	873,530	602,891	341,948	822,000	7,500	2,647,869	2,526,204	5,174,073
SIERRA MADRE	104,664	72,237	45,196	98,490	3,000	323,588	302,684	626,272
SIGNAL HILL	110,124	76,005	47,304	103,628	3,000	340,061	318,474	658,535
SOUTH EL MONTE	182,957	126,273	75,414	172,164	4,000	560,807	529,101	1,089,909
SOUTH GATE	868,417	599,362	339,974	817,188	7,500	2,632,441	2,511,417	5,143,858
SOUTH PASADENA	252,446	174,233	102,234	237,554	6,000	772,466	730,060	1,502,526
TEMPLE CITY	342,220	236,193	136,883	322,032	6,000	1,043,327	989,682	2,033,009
TORRANCE	1,374,984	948,984	535,489	1,293,873	10,000	4,163,331	3,976,385	8,139,716
VERNON	1,976	1,364	5,563	1,859	1,000	11,762	5,715	17,477
WALNUT	266,250	183,760	107,562	250,544	6,000	814,115	769,981	1,584,096
WEST COVINA	1,026,181	708,248	400,865	965,646	10,000	3,110,940	2,967,664	6,078,604
WEST HOLLYWOOD	334,212	230,666	133,793	314,497	6,000	1,019,168	966,525	1,985,694
WESTLAKE VILLAGE	76,279	52,646	34,241	71,779	2,000	236,944	220,594	457,539
WHITTIER	822,528	567,691	322,263	774,006	7,500	2,493,987	2,378,708	4,872,695

Local Streets and Roads - Projected FY2025-26 Revenues

Based on State Dept of Finance statewide revenue projections

Estimated May 2025

Estimated May 2025	Highway Users Tax Acct (HUTA) ⁽¹⁾ Streets & Highways Code					TOTAL HUTA	Road Mntnc Rehab Acct	TOTAL
	Sec2103 ⁽⁵⁾	Sec2105 ⁽³⁾	Sec2106 ⁽³⁾	Sec2107 ⁽³⁾	Sec2107.5 ⁽⁴⁾			
MADERA COUNTY								
CHOWCHILLA	180,466	124,553	50,686	169,820	4,000	529,525	521,897	1,051,422
MADERA	623,341	430,217	163,294	586,570	7,500	1,810,922	1,802,671	3,613,593
MARIN COUNTY								
BELVEDERE	19,891	13,729	13,364	18,718	1,000	66,702	57,525	124,228
CORTE MADERA	95,627	66,000	45,972	89,986	3,000	300,585	276,549	577,133
FAIRFAX	71,128	49,091	35,424	66,932	2,000	224,575	205,698	430,273
LARKSPUR	122,496	84,544	57,540	115,269	3,000	382,849	354,251	737,100
MILL VALLEY	132,338	91,337	61,778	124,532	3,000	412,985	382,716	795,700
NOVATO	497,905	343,643	219,171	468,533	7,500	1,536,753	1,439,916	2,976,669
ROSS	21,877	15,099	14,219	20,586	1,000	72,781	63,267	136,048
SAN ANSELMO	119,733	82,637	56,351	112,670	3,000	374,390	346,261	720,651
SAN RAFAEL	576,862	398,138	253,166	542,833	7,500	1,778,499	1,668,256	3,446,755
SAUSALITO	66,670	46,014	33,505	62,737	2,000	210,926	192,807	403,733
TIBURON	85,531	59,032	41,625	80,486	2,000	268,675	247,353	516,027
MARIPOSA COUNTY								
MENDOCINO COUNTY								
FORT BRAGG	67,232	46,402	33,673	63,266	2,000	212,574	194,432	407,005
POINT ARENA	4,308	2,973	6,650	4,054	1,000	18,985	12,458	31,443
UKIAH	155,479	107,309	71,572	146,308	4,000	484,667	449,639	934,306
WILLITS	46,329	31,975	24,696	43,596	1,000	147,597	133,982	281,579
MERCED COUNTY								
ATWATER	297,408	205,264	96,583	279,863	6,000	885,118	860,088	1,745,205
DOS PALOS	54,271	37,457	21,548	51,069	2,000	166,345	156,948	323,293
GUSTINE	56,930	39,292	22,369	53,572	2,000	174,164	164,640	338,804
LIVINGSTON	133,790	92,339	46,089	125,898	3,000	401,115	386,913	788,029
LOS BANOS	444,084	306,497	141,848	417,887	6,000	1,316,316	1,284,268	2,600,584
MERCED	860,063	593,597	270,224	809,327	7,500	2,540,710	2,487,258	5,027,969
MODOC COUNTY								
ALTURAS	25,473	17,581	14,336	25,023	1,000	83,413	73,667	157,080
MONO COUNTY								
MAMMOTH LAKES	67,616	46,667	65,408	1,559,551	2,000	1,741,242	195,542	1,936,784

Local Streets and Roads - Projected FY2025-26 Revenues

Based on State Dept of Finance statewide revenue projections

Estimated May 2025

Estimated May 2025	Highway Users Tax Acct (HUTA) ⁽¹⁾ Streets & Highways Code					TOTAL HUTA	Road Mntnc Rehab Acct	TOTAL
	Sec2103 ⁽⁵⁾	Sec2105 ⁽³⁾	Sec2106 ⁽³⁾	Sec2107 ⁽³⁾	Sec2107.5 ⁽⁴⁾			
MONTEREY COUNTY								
CARMEL-BY-THE-SEA	29,669	20,477	13,625	27,918	1,000	92,689	85,800	178,489
DEL REY OAKS	14,787	10,206	9,199	13,915	1,000	49,107	42,765	91,872
GONZALES	80,053	55,251	28,612	75,331	2,000	241,246	231,509	472,755
GREENFIELD	192,556	132,898	62,076	181,197	4,000	572,727	556,862	1,129,589
KING CITY	133,134	91,886	44,401	125,281	3,000	397,703	385,018	782,720
MARINA	212,541	146,691	68,021	200,003	5,000	632,256	614,658	1,246,914
MONTEREY	266,662	184,044	84,119	250,931	6,000	791,757	771,173	1,562,930
PACIFIC GROVE	140,270	96,812	46,524	131,996	3,000	418,602	405,655	824,257
SALINAS	1,517,493	1,047,341	456,183	1,427,975	10,000	4,458,992	4,388,513	8,847,505
SAND CITY	3,549	2,450	5,856	3,340	1,000	16,195	10,265	26,459
SEASIDE	306,529	211,560	95,978	288,447	6,000	908,514	886,467	1,794,981
SOLEDAD	258,009	178,072	81,545	242,788	6,000	766,414	746,148	1,512,562
NAPA COUNTY								
AMERICAN CANYON	203,766	140,635	69,401	191,746	5,000	610,547	589,281	1,199,828
CALISTOGA	49,045	33,850	20,349	46,152	2,000	151,396	141,836	293,232
NAPA	729,729	503,643	236,150	686,682	7,500	2,163,704	2,110,339	4,274,042
SAINT HELENA	50,534	34,878	20,821	47,553	2,000	155,786	146,142	301,928
YOUNTVILLE	27,955	19,294	13,663	26,306	1,000	88,217	80,844	169,061
NEVADA COUNTY								
GRASS VALLEY	127,459	87,969	118,848	119,940	3,000	457,217	368,605	825,822
NEVADA CITY	31,354	21,640	32,855	29,505	1,000	116,355	90,675	207,030
TRUCKEE	157,128	108,446	145,395	1,867,768	4,000	2,282,737	454,405	2,737,142

Local Streets and Roads - Projected FY2025-26 Revenues

Based on State Dept of Finance statewide revenue projections

Estimated May 2025

Estimated May 2025	Highway Users Tax Acct (HUTA) ⁽¹⁾ Streets & Highways Code					TOTAL HUTA	Road Mntnc Rehab Acct	TOTAL
	Sec2103 ⁽⁵⁾	Sec2105 ⁽³⁾	Sec2106 ⁽³⁾	Sec2107 ⁽³⁾	Sec2107.5 ⁽⁴⁾			
ORANGE COUNTY								
ALISO VIEJO	485,056	334,775	216,868	456,442	7,500	1,500,642	1,402,758	2,903,399
ANAHEIM	3,243,687	2,238,723	1,422,950	3,052,340	10,000	9,967,701	9,380,580	19,348,281
BREA	446,949	308,475	200,208	420,584	6,000	1,382,216	1,292,555	2,674,771
BUENA PARK	788,645	544,305	349,598	742,122	7,500	2,432,170	2,280,720	4,712,890
COSTA MESA	1,053,565	727,148	465,422	991,414	10,000	3,247,548	3,046,856	6,294,404
CYPRESS	471,580	325,474	210,976	443,761	7,500	1,459,291	1,363,785	2,823,076
DANA POINT	310,350	214,197	140,486	292,042	6,000	963,075	897,517	1,860,592
FOUNTAIN VALLEY	534,991	369,239	238,700	503,431	7,500	1,653,861	1,547,166	3,201,027
FULLERTON	1,347,413	929,956	593,893	1,267,929	10,000	4,149,191	3,896,651	8,045,843
GARDEN GROVE	1,610,301	1,111,395	708,829	1,515,309	10,000	4,955,834	4,656,910	9,612,743
HUNTINGTON BEACH	1,857,334	1,281,892	816,832	1,747,769	10,000	5,713,826	5,371,316	11,085,142
IRVINE	2,945,793	2,033,122	1,292,710	2,772,019	10,000	9,053,644	8,519,084	17,572,728
LAGUNA BEACH	215,285	148,585	98,923	202,585	5,000	670,378	622,593	1,292,972
LAGUNA HILLS	293,774	202,756	133,239	276,444	6,000	912,213	849,579	1,761,792
LAGUNA NIGUEL	603,984	416,856	268,863	568,354	7,500	1,865,558	1,746,690	3,612,247
LAGUNA WOODS	166,174	114,690	77,452	156,372	4,000	518,688	480,568	999,256
LA HABRA	587,538	405,506	261,674	552,879	7,500	1,815,097	1,699,131	3,514,229
LAKE FOREST	813,987	561,796	360,677	765,969	7,500	2,509,929	2,354,008	4,863,937
LA PALMA	145,843	100,658	68,563	137,239	4,000	456,303	421,770	878,072
LOS ALAMITOS	111,885	77,221	53,716	105,285	3,000	351,107	323,565	674,672
MISSION VIEJO	876,574	604,992	388,041	824,864	7,500	2,701,970	2,535,006	5,236,977
NEWPORT BEACH	796,933	550,026	353,221	749,921	7,500	2,457,601	2,304,689	4,762,290
ORANGE	1,317,604	909,382	580,861	1,239,878	10,000	4,057,725	3,810,445	7,868,170
PLACENTIA	489,102	337,567	218,637	460,249	7,500	1,513,056	1,414,458	2,927,513
RANCHO SANTA MARGARITA	448,729	309,703	200,986	422,258	6,000	1,387,676	1,297,701	2,685,377
SAN CLEMENTE	600,331	414,336	267,267	564,917	7,500	1,854,351	1,736,127	3,590,478
SAN JUAN CAPISTRANO	327,704	226,174	148,073	308,372	6,000	1,016,323	947,702	1,964,025
SANTA ANA	2,910,646	2,008,865	1,277,343	2,738,945	10,000	8,945,798	8,417,440	17,363,238
SEAL BEACH	236,918	163,516	108,381	222,942	6,000	737,758	685,156	1,422,914
STANTON	377,386	260,463	169,794	355,123	6,000	1,168,766	1,091,380	2,260,146
TUSTIN	752,411	519,298	333,756	708,026	7,500	2,320,991	2,175,935	4,496,926
VILLA PARK	54,870	37,870	28,789	51,633	2,000	175,163	158,682	333,845
WESTMINSTER	851,606	587,760	377,125	801,369	7,500	2,625,361	2,462,802	5,088,163
YORBA LINDA	637,267	439,828	283,415	599,674	7,500	1,967,685	1,842,944	3,810,629

Local Streets and Roads - Projected FY2025-26 Revenues

Based on State Dept of Finance statewide revenue projections

Estimated May 2025

Estimated May 2025	Highway Users Tax Acct (HUTA) ⁽¹⁾ Streets & Highways Code					TOTAL HUTA	Road Mntnc Rehab Acct	TOTAL
	Sec2103 ⁽⁵⁾	Sec2105 ⁽³⁾	Sec2106 ⁽³⁾	Sec2107 ⁽³⁾	Sec2107.5 ⁽⁴⁾			
PLACER COUNTY								
AUBURN	128,929	88,984	60,416	121,324	3,000	402,653	372,857	775,510
COLFAX	18,721	12,921	12,876	17,616	1,000	63,134	54,140	117,273
LINCOLN	498,514	344,063	219,842	469,106	7,500	1,539,025	1,441,677	2,980,702
LOOMIS	63,748	43,998	32,299	59,988	2,000	202,032	184,357	386,389
ROCKLIN	670,626	462,851	294,086	631,065	7,500	2,066,127	1,939,415	4,005,543
ROSEVILLE	1,445,307	997,520	628,257	1,360,047	10,000	4,441,131	4,179,754	8,620,885
PLUMAS COUNTY								
PORTOLA	19,770	13,645	9,440	154,935	1,000	198,789	57,173	255,962
RIVERSIDE COUNTY								
BANNING	292,313	201,748	130,397	275,069	6,000	905,527	845,354	1,750,881
BEAUMONT	537,707	371,114	235,834	505,987	7,500	1,658,142	1,555,021	3,213,162
BLYTHE	175,858	121,373	80,360	165,484	4,000	547,075	508,572	1,055,647
CALIMESA	101,771	70,240	48,527	95,767	3,000	319,305	294,315	613,620
CANYON LAKE	103,578	71,487	49,304	97,468	3,000	324,837	299,542	624,380
CATHEDRAL CITY	480,608	331,705	211,301	452,256	7,500	1,483,370	1,389,893	2,873,263
COACHELLA	404,320	279,053	178,522	380,468	6,000	1,248,363	1,169,272	2,417,635
CORONA	1,467,231	1,012,651	635,220	1,380,678	10,000	4,505,779	4,243,157	8,748,935
DESERT HOT SPRINGS	305,808	211,062	136,195	287,768	6,000	946,834	884,381	1,831,215
EASTVALE	652,607	450,415	285,203	614,109	7,500	2,009,835	1,887,307	3,897,142
HEMET	839,703	579,545	365,592	790,169	7,500	2,582,509	2,428,379	5,010,888
INDIAN WELLS	44,924	31,006	24,102	42,274	1,000	143,307	129,919	273,226
INDIO	849,227	586,118	369,684	799,131	7,500	2,611,661	2,455,923	5,067,584
JURUPA VALLEY	981,472	677,391	426,506	923,574	10,000	3,018,943	2,838,368	5,857,310
LAKE ELSINORE	669,155	461,836	292,313	629,681	7,500	2,060,487	1,935,163	3,995,650
LA QUINTA	359,339	248,008	159,196	338,141	6,000	1,110,684	1,039,190	2,149,874
MENIFEE	1,044,771	721,078	453,703	983,139	10,000	3,212,691	3,021,424	6,234,115
MORENO VALLEY	1,948,587	1,344,873	842,042	1,833,639	10,000	5,979,142	5,635,216	11,614,358
MURRIETA	1,036,773	715,558	450,266	975,613	10,000	3,188,211	2,998,295	6,186,506
NORCO	249,374	172,112	111,948	234,663	6,000	774,097	721,177	1,495,274
PALM DESERT	476,581	328,926	209,571	448,467	7,500	1,471,044	1,378,247	2,849,291
PALM SPRINGS	413,647	285,490	182,530	389,246	6,000	1,276,914	1,196,247	2,473,160
PERRIS	742,756	512,634	323,937	698,940	7,500	2,285,767	2,148,012	4,433,778
RANCHO MIRAGE	159,132	109,829	73,174	149,745	4,000	495,879	460,201	956,080
RIVERSIDE	2,974,581	2,052,992	1,282,877	2,799,109	10,000	9,119,559	8,602,338	17,721,897
SAN JACINTO	503,758	347,683	221,248	474,041	7,500	1,554,230	1,456,843	3,011,074
TEMECULA	1,027,642	709,256	446,343	967,021	10,000	3,160,262	2,971,889	6,132,151
WILDOMAR	343,615	237,156	152,440	323,345	6,000	1,062,555	993,717	2,056,272

Local Streets and Roads - Projected FY2025-26 Revenues

Based on State Dept of Finance statewide revenue projections

Estimated May 2025

Estimated May 2025	Highway Users Tax Acct (HUTA) ⁽¹⁾ Streets & Highways Code					TOTAL HUTA	Road Mntnc Rehab Acct	TOTAL
	Sec2103 ⁽⁵⁾	Sec2105 ⁽³⁾	Sec2106 ⁽³⁾	Sec2107 ⁽³⁾	Sec2107.5 ⁽⁴⁾			
SACRAMENTO COUNTY								
CITRUS HEIGHTS	821,516	566,993	375,100	773,054	7,500	2,544,164	2,375,783	4,919,947
ELK GROVE	1,673,347	1,154,908	759,065	1,574,635	10,000	5,171,956	4,839,235	10,011,191
FOLSOM	824,344	568,945	376,375	775,716	7,500	2,552,880	2,383,962	4,936,842
GALT	241,479	166,664	113,647	227,234	6,000	755,024	698,346	1,453,370
ISLETON	7,445	5,139	8,156	7,006	1,000	28,746	21,531	50,277
RANCHO CORDOVA	768,959	530,719	351,410	723,598	7,500	2,382,186	2,223,791	4,605,977
SACRAMENTO	4,873,665	3,363,698	2,201,616	4,586,164	20,000	15,045,143	14,094,392	29,139,535
SAN BENITO COUNTY								
HOLLISTER	401,501	277,107	174,553	377,816	6,000	1,236,977	1,161,120	2,398,096
SAN JUAN BAPTISTA	19,517	13,470	13,052	18,366	1,000	65,404	56,442	121,846
SAN BERNARDINO COUNTY								
ADELANTO	342,950	236,697	147,666	322,719	6,000	1,056,032	991,794	2,047,826
APPLE VALLEY	710,970	490,696	300,976	669,030	7,500	2,179,173	2,056,091	4,235,264
BARSTOW	239,129	165,041	104,416	225,022	6,000	739,608	691,548	1,431,156
BIG BEAR LAKE	47,209	32,583	24,467	405,899	2,000	512,158	136,527	648,685
CHINO	867,068	598,432	366,003	815,919	7,500	2,654,922	2,507,517	5,162,439
CHINO HILLS	734,018	506,603	310,577	690,718	7,500	2,249,417	2,122,743	4,372,159
COLTON	503,440	347,463	214,523	473,742	7,500	1,546,668	1,455,922	3,002,590
FONTANA	2,006,220	1,384,650	840,552	1,887,872	10,000	6,129,294	5,801,888	11,931,182
GRAND TERRACE	122,926	84,841	56,009	115,675	3,000	382,451	355,497	737,948
HESPERIA	937,325	646,921	395,271	882,032	10,000	2,871,549	2,710,696	5,582,246
HIGHLAND	532,547	367,552	226,648	501,131	7,500	1,635,378	1,540,098	3,175,476
LOMA LINDA	233,800	161,364	102,196	220,008	6,000	723,367	676,137	1,399,505
MONTCLAIR	356,033	245,726	153,116	335,030	6,000	1,095,906	1,029,630	2,125,536
NEEDLES	46,114	31,827	24,010	43,393	1,000	146,344	133,359	279,703
ONTARIO	1,697,181	1,171,358	711,812	1,597,063	10,000	5,187,415	4,908,162	10,095,577
RANCHO CUCAMONGA	1,631,897	1,126,300	684,616	1,535,631	10,000	4,988,444	4,719,364	9,707,808
REDLANDS	684,111	472,159	289,787	643,755	7,500	2,097,313	1,978,415	4,075,728
RIALTO	974,092	672,297	410,588	916,630	10,000	2,983,608	2,817,026	5,800,633
SAN BERNARDINO	2,121,580	1,464,268	888,608	1,996,426	10,000	6,480,882	6,135,501	12,616,383
TWENTYNINE PALMS	264,817	182,771	115,118	249,195	6,000	817,901	765,837	1,583,738
UPLAND	738,569	509,745	312,473	695,001	7,500	2,263,288	2,135,905	4,399,194
VICTORVILLE	1,294,276	893,281	543,970	1,217,926	10,000	3,959,453	3,742,980	7,702,433
YUCAIPA	512,318	353,591	218,222	482,096	7,500	1,573,726	1,481,597	3,055,324
YUCCA VALLEY	203,850	140,693	89,720	191,825	5,000	631,088	589,524	1,220,612

Local Streets and Roads - Projected FY2025-26 Revenues

Based on State Dept of Finance statewide revenue projections

Estimated May 2025

Estimated May 2025	Highway Users Tax Acct (HUTA) ⁽¹⁾ Streets & Highways Code					TOTAL HUTA	Road Mntnc Rehab Acct	TOTAL
	Sec2103 ⁽⁵⁾	Sec2105 ⁽³⁾	Sec2106 ⁽³⁾	Sec2107 ⁽³⁾	Sec2107.5 ⁽⁴⁾			
SAN DIEGO COUNTY								
CARLSBAD	1,077,258	743,500	482,762	1,013,710	10,000	3,327,231	3,115,377	6,442,608
CHULA VISTA	2,605,812	1,798,475	1,160,956	2,452,093	10,000	8,027,336	7,535,875	15,563,211
CORONADO	220,117	151,920	102,463	207,132	5,000	686,633	636,568	1,323,201
DEL MAR	37,002	25,538	21,217	34,819	1,000	119,575	107,007	226,581
EL CAJON	995,707	687,215	446,579	936,970	10,000	3,076,471	2,879,534	5,956,006
ENCINITAS	576,010	397,550	260,366	542,031	7,500	1,783,457	1,665,792	3,449,248
ESCONDIDO	1,416,837	977,870	633,428	1,333,257	10,000	4,371,392	4,097,421	8,468,812
IMPERIAL BEACH	248,896	171,783	115,231	234,214	6,000	776,124	719,796	1,495,920
LA MESA	567,872	391,933	256,755	534,373	7,500	1,758,433	1,642,256	3,400,689
LEMON GROVE	258,177	178,188	119,349	242,947	6,000	804,662	746,635	1,551,297
NATIONAL CITY	549,198	379,044	248,470	516,800	7,500	1,701,012	1,588,252	3,289,264
OCEANSIDE	1,622,813	1,120,030	724,816	1,527,082	10,000	5,004,741	4,693,093	9,697,835
POWAY	461,447	318,481	209,536	434,226	6,000	1,429,689	1,334,480	2,764,170
SAN DIEGO	12,974,216	8,954,523	5,761,250	12,208,859	20,000	39,918,847	37,520,776	77,439,623
SAN MARCOS	899,031	620,492	403,686	845,997	7,500	2,776,705	2,599,952	5,376,657
SANTEE	558,666	385,579	252,671	525,710	7,500	1,730,126	1,615,633	3,345,759
SOLANA BEACH	121,100	83,581	58,530	113,956	3,000	380,167	350,215	730,383
VISTA	933,916	644,569	419,163	878,824	7,500	2,883,972	2,700,838	5,584,810
SAN FRANCISCO COUNTY								
SAN FRANCISCO	8,184,771	5,648,952	2,105,236	7,701,947	20,000	23,660,906	23,669,945	47,330,851
SAN JOAQUIN COUNTY								
ESCALON	69,714	48,115	33,757	65,601	2,000	219,187	201,609	420,796
LATHROP	346,818	239,366	148,858	326,359	6,000	1,067,401	1,002,980	2,070,380
LODI	622,704	429,777	263,453	585,971	7,500	1,909,405	1,800,830	3,710,235
MANTECA	851,447	587,650	358,466	801,220	7,500	2,606,283	2,462,342	5,068,625
MOUNTAIN HOUSE	220,923	152,476	96,565	207,890	5,000	682,854	638,897	1,321,752
RIPON	149,729	103,340	66,993	140,897	4,000	464,959	433,009	897,968
STOCKTON	2,999,549	2,070,224	1,250,725	2,822,603	10,000	9,153,101	8,674,543	17,827,643
TRACY	904,753	624,441	380,608	851,381	7,500	2,768,684	2,616,500	5,385,184
SAN LUIS OBISPO COUNTY								
ARROYO GRANDE	171,822	118,588	91,607	161,686	4,000	547,701	496,899	1,044,601
ATASCADERO	288,445	199,079	150,527	271,430	6,000	915,480	834,169	1,749,649
EL PASO DE ROBLES	293,905	202,847	153,285	276,567	6,000	932,604	849,958	1,782,563
GROVER BEACH	119,770	82,663	65,310	112,705	3,000	383,448	346,370	729,817
MORRO BAY	98,867	68,236	54,749	93,035	3,000	317,888	285,919	603,807
PISMO BEACH	75,427	52,058	42,907	70,977	2,000	243,368	218,130	461,498
SAN LUIS OBISPO	455,931	314,673	235,143	429,035	6,000	1,440,782	1,318,528	2,759,310

Local Streets and Roads - Projected FY2025-26 Revenues

Based on State Dept of Finance statewide revenue projections

Estimated May 2025

Estimated May 2025	Highway Users Tax Acct (HUTA) ⁽¹⁾ Streets & Highways Code					TOTAL HUTA	Road Mntnc Rehab Acct	TOTAL
	Sec2103 ⁽⁵⁾	Sec2105 ⁽³⁾	Sec2106 ⁽³⁾	Sec2107 ⁽³⁾	Sec2107.5 ⁽⁴⁾			
SAN MATEO COUNTY								
ATHERTON	67,260	46,422	34,035	63,292	2,000	213,009	194,513	407,522
BELMONT	263,403	181,795	119,290	247,865	6,000	818,352	761,748	1,580,100
BRISBANE	45,430	31,355	24,547	42,750	1,000	145,082	131,382	276,463
BURLINGAME	292,594	201,942	131,978	275,334	6,000	907,848	846,167	1,754,014
COLMA	13,879	9,579	10,833	13,060	1,000	48,351	40,138	88,489
DALY CITY	981,800	677,617	431,547	923,883	10,000	3,024,846	2,839,315	5,864,162
EAST PALO ALTO	281,271	194,127	127,057	264,679	6,000	873,135	813,423	1,686,558
FOSTER CITY	315,473	217,733	141,923	296,863	6,000	977,991	912,331	1,890,322
HALF MOON BAY	110,049	75,954	52,634	103,557	3,000	345,194	318,257	663,451
HILLSBOROUGH	106,509	73,510	51,095	100,226	3,000	334,341	308,020	642,361
MENLO PARK	319,771	220,699	143,791	300,908	6,000	991,170	924,763	1,915,932
MILLBRAE	218,404	150,737	99,731	205,520	5,000	679,391	631,612	1,311,003
PACIFICA	362,195	249,979	162,231	340,829	6,000	1,121,235	1,047,451	2,168,685
PORTOLA VALLEY	41,553	28,679	22,861	39,102	1,000	133,195	120,169	253,364
REDWOOD CITY	781,555	539,413	344,509	735,451	7,500	2,408,427	2,260,218	4,668,646
SAN BRUNO	412,074	284,404	183,911	387,765	6,000	1,274,155	1,191,697	2,465,851
SAN CARLOS	287,865	198,678	129,922	270,883	6,000	893,348	832,490	1,725,838
SAN MATEO	990,051	683,311	435,133	931,647	10,000	3,050,142	2,863,176	5,913,318
SOUTH SAN FRANCISCO	620,513	428,265	274,511	583,908	7,500	1,914,697	1,794,492	3,709,189
WOODSIDE	49,701	34,302	26,403	46,769	2,000	159,174	143,732	302,906
SANTA BARBARA COUNTY								
BUELLTON	48,174	33,249	21,601	45,332	2,000	150,356	139,317	289,673
CARPINTERIA	123,067	84,938	47,720	115,807	3,000	374,531	355,903	730,434
GOLETA	305,874	211,107	111,473	287,830	6,000	922,284	884,571	1,806,855
GUADALUPE	81,252	56,078	33,136	76,459	2,000	248,925	234,976	483,900
LOMPOC	417,168	287,921	150,287	392,559	6,000	1,253,936	1,206,430	2,460,366
SANTA BARBARA	818,585	564,970	290,281	770,296	7,500	2,451,632	2,367,306	4,818,938
SANTA MARIA	1,035,855	714,925	366,054	974,749	10,000	3,101,584	2,995,641	6,097,225
SOLVANG	54,449	37,579	23,789	51,237	2,000	169,054	157,463	326,517

Local Streets and Roads - Projected FY2025-26 Revenues

Based on State Dept of Finance statewide revenue projections

Estimated May 2025

Estimated May 2025	Highway Users Tax Acct (HUTA) ⁽¹⁾ Streets & Highways Code					TOTAL HUTA	Road Mntnc Rehab Acct	TOTAL
	Sec2103 ⁽⁵⁾	Sec2105 ⁽³⁾	Sec2106 ⁽³⁾	Sec2107 ⁽³⁾	Sec2107.5 ⁽⁴⁾			
SANTA CLARA COUNTY								
CAMPBELL	409,508	282,633	171,359	385,351	6,000	1,254,851	1,184,276	2,439,126
CUPERTINO	565,072	390,000	234,631	531,738	7,500	1,728,940	1,634,158	3,363,098
GILROY	571,580	394,492	237,278	537,862	7,500	1,748,713	1,652,981	3,401,694
LOS ALTOS	295,497	203,946	124,987	278,066	6,000	908,495	854,563	1,763,058
LOS ALTOS HILLS	79,379	54,785	37,086	74,696	2,000	247,946	229,559	477,504
LOS GATOS	313,216	216,175	132,194	294,739	6,000	962,324	905,804	1,868,128
MILPITAS	765,812	528,547	316,278	720,637	7,500	2,338,774	2,214,691	4,553,465
MONTE SERENO	33,546	23,153	18,444	31,567	1,000	107,709	97,013	204,722
MORGAN HILL	434,391	299,807	181,479	408,766	6,000	1,330,443	1,256,237	2,586,680
MOUNTAIN VIEW	810,409	559,327	334,417	762,603	7,500	2,474,255	2,343,662	4,817,917
PALO ALTO	639,196	441,159	264,780	601,490	7,500	1,954,125	1,848,523	3,802,648
SAN JOSE	9,481,716	6,544,075	3,861,287	8,922,384	20,000	28,829,462	27,420,644	56,250,107
SANTA CLARA	1,236,643	853,504	507,778	1,163,693	10,000	3,771,618	3,576,309	7,347,927
SARATOGA	291,170	200,960	123,227	273,994	6,000	895,351	842,050	1,737,401
SUNNYVALE	1,475,622	1,018,442	604,978	1,388,574	10,000	4,497,615	4,267,423	8,765,039
SANTA CRUZ COUNTY								
CAPITOLA	92,331	63,725	40,070	86,884	2,000	285,009	267,015	552,024
SANTA CRUZ	605,875	418,162	236,240	570,134	7,500	1,837,912	1,752,161	3,590,073
SCOTTS VALLEY	113,027	78,009	47,976	106,360	3,000	348,372	326,870	675,242
WATSONVILLE	485,197	334,872	190,142	456,575	7,500	1,474,285	1,403,164	2,877,449
SHASTA COUNTY								
ANDERSON	104,618	72,205	59,965	98,446	3,000	338,233	302,549	640,782
REDDING	877,941	605,936	467,736	826,151	7,500	2,785,263	2,538,961	5,324,223
SHASTA LAKE	96,854	66,846	55,871	91,140	3,000	313,712	280,097	593,808
SIERRA COUNTY								
LOYALTON	6,911	4,770	6,430	6,504	1,000	25,616	19,988	45,603
SISKIYOU COUNTY								
DORRIS	8,035	5,546	8,954	7,561	1,000	31,096	23,238	54,334
DUNSMUIR	15,949	11,007	13,044	26,463	1,000	67,464	46,123	113,587
ETNA	6,406	4,421	8,111	6,028	1,000	25,966	18,525	44,491
FORT JONES	6,499	4,486	8,160	6,116	1,000	26,261	18,796	45,057
MONTAGUE	11,510	7,944	10,750	10,831	1,000	42,034	33,286	75,319
MOUNT SHASTA	30,352	20,948	20,490	71,670	1,000	144,461	87,777	232,238
TULELAKE	8,429	5,817	9,157	7,931	1,000	32,334	24,375	56,709
WEED	27,337	18,867	18,931	25,724	1,000	91,859	79,056	170,916
YREKA	73,095	50,448	42,585	78,952	2,000	247,080	211,386	458,466

Local Streets and Roads - Projected FY2025-26 Revenues

Based on State Dept of Finance statewide revenue projections

Estimated May 2025

Estimated May 2025	Highway Users Tax Acct (HUTA) ⁽¹⁾ Streets & Highways Code					TOTAL HUTA	Road Mntnc Rehab Acct	TOTAL
	Sec2103 ⁽⁵⁾	Sec2105 ⁽³⁾	Sec2106 ⁽³⁾	Sec2107 ⁽³⁾	Sec2107.5 ⁽⁴⁾			
SOLANO COUNTY								
BENICIA	253,626	175,047	113,693	238,664	6,000	787,030	733,473	1,520,503
DIXON	181,711	125,413	82,817	170,992	4,000	564,933	525,499	1,090,432
FAIRFIELD	1,127,998	778,520	489,102	1,061,457	10,000	3,467,077	3,262,114	6,729,192
RIO VISTA	93,688	64,662	45,025	88,162	2,000	293,537	270,942	564,479
SUISUN CITY	275,840	190,379	123,231	259,568	6,000	855,017	797,715	1,652,731
VACAVILLE	957,385	660,766	415,850	900,908	10,000	2,944,909	2,768,709	5,713,618
VALLEJO	1,179,404	813,999	511,172	1,109,830	10,000	3,624,404	3,410,775	7,035,180
SONOMA COUNTY								
CLOVERDALE	84,370	58,230	41,448	79,393	2,000	265,441	243,994	509,436
COTATI	70,997	49,000	35,639	66,809	2,000	224,445	205,319	429,764
HEALDSBURG	105,901	73,090	50,800	99,653	3,000	332,444	306,259	638,703
PETALUMA	560,295	386,704	248,173	527,243	7,500	1,729,915	1,620,346	3,350,261
ROHNERT PARK	412,739	284,863	184,080	388,391	6,000	1,276,073	1,193,620	2,469,692
SANTA ROSA	1,667,541	1,150,901	729,122	1,569,171	10,000	5,126,735	4,822,443	9,949,179
SEBASTOPOL	70,454	48,626	35,403	66,298	2,000	222,779	203,748	426,528
SONOMA	100,862	69,613	48,611	94,912	3,000	316,998	291,688	608,687
WINDSOR	245,525	169,456	111,448	231,041	6,000	763,470	710,046	1,473,515
STANISLAUS COUNTY								
CERES	470,409	324,666	192,467	442,659	6,000	1,436,202	1,360,399	2,796,601
HUGHSON	72,214	49,841	33,610	67,954	2,000	225,619	208,840	434,459
MODESTO	2,049,834	1,414,751	822,571	1,928,913	10,000	6,226,067	5,928,015	12,154,082
NEWMAN	115,715	79,864	50,964	108,889	3,000	358,432	334,643	693,075
OAKDALE	216,999	149,768	91,371	204,198	5,000	667,335	627,549	1,294,885
PATTERSON	232,161	160,232	97,419	218,466	5,000	713,278	671,398	1,384,676
RIVERBANK	234,184	161,629	98,226	220,369	5,000	719,408	677,248	1,396,655
TURLOCK	675,018	465,883	274,095	635,198	7,500	2,057,694	1,952,117	4,009,811
WATERFORD	85,316	58,883	38,836	80,283	2,000	265,319	246,730	512,049
SUTTER COUNTY								
LIVE OAK	90,542	62,490	39,500	85,201	2,000	279,733	261,842	541,575
YUBA CITY	657,955	454,106	256,964	619,141	7,500	1,995,666	1,902,771	3,898,437
TEHAMA COUNTY								
CORNING	77,000	53,144	34,609	72,458	2,000	239,210	222,680	461,890
RED BLUFF	138,678	95,713	58,487	130,498	3,000	426,376	401,051	827,427
TEHAMA	4,064	2,805	6,373	3,825	1,000	18,068	11,754	29,822
TRINITY COUNTY								

Local Streets and Roads - Projected FY2025-26 Revenues

Based on State Dept of Finance statewide revenue projections

Estimated May 2025

Estimated May 2025	Highway Users Tax Acct (HUTA) ⁽¹⁾ Streets & Highways Code					TOTAL HUTA	Road Mntnc Rehab Acct	TOTAL
	Sec2103 ⁽⁵⁾	Sec2105 ⁽³⁾	Sec2106 ⁽³⁾	Sec2107 ⁽³⁾	Sec2107.5 ⁽⁴⁾			
TULARE COUNTY								
DINUBA	239,494	165,293	94,348	225,366	6,000	730,501	692,604	1,423,105
EXETER	96,929	66,898	41,042	91,211	3,000	299,080	280,313	579,393
FARMERSVILLE	97,210	67,092	41,147	91,475	3,000	299,924	281,126	581,050
LINDSAY	118,862	82,036	49,243	111,850	3,000	364,991	343,743	708,733
PORTERVILLE	589,383	406,780	225,173	554,615	7,500	1,783,451	1,704,467	3,487,918
TULARE	663,040	457,616	252,714	623,927	7,500	2,004,796	1,917,478	3,922,274
VISALIA	1,353,557	934,196	510,901	1,273,710	10,000	4,082,364	3,914,418	7,996,782
WOODLAKE	72,233	49,854	31,808	67,972	2,000	223,867	208,894	432,761
TUOLUMNE COUNTY								
SONORA	48,727	33,630	33,067	45,852	2,000	163,276	140,915	304,191
VENTURA COUNTY								
CAMARILLO	662,796	457,448	293,909	623,698	7,500	2,045,351	1,916,774	3,962,124
FILLMORE	159,778	110,275	74,494	150,353	4,000	498,900	462,070	960,970
MOORPARK	339,204	234,111	152,759	319,194	6,000	1,051,269	980,961	2,032,230
OJAI	71,999	49,692	36,206	67,752	2,000	227,648	208,217	435,865
OXNARD	1,888,932	1,303,700	828,744	1,777,502	10,000	5,808,878	5,462,695	11,271,573
PORT HUENEME	206,641	142,619	94,936	194,451	5,000	643,647	597,595	1,241,242
SAN BUENAVENTURA	1,030,910	711,512	454,479	970,096	10,000	3,176,998	2,981,341	6,158,339
SANTA PAULA	293,643	202,666	132,886	276,321	6,000	911,515	849,200	1,760,715
SIMI VALLEY	1,181,867	815,699	520,325	1,112,147	10,000	3,640,038	3,417,898	7,057,936
THOUSAND OAKS	1,187,738	819,751	522,886	1,117,673	10,000	3,658,049	3,434,879	7,092,929
YOLO COUNTY								
DAVIS	611,035	421,723	281,839	574,990	7,500	1,897,088	1,767,084	3,664,172
WEST SACRAMENTO	508,319	350,831	235,269	478,333	7,500	1,580,251	1,470,033	3,050,284
WINTERS	71,053	49,039	37,015	66,862	2,000	225,969	205,482	431,451
WOODLAND	568,199	392,159	262,418	534,681	7,500	1,764,957	1,643,204	3,408,162
YUBA COUNTY								
MARYSVILLE	123,254	85,067	44,630	115,983	3,000	371,935	356,445	728,380
WHEATLAND	36,458	25,163	16,582	34,308	1,000	113,510	105,436	218,946
Statewide Total	\$311,058,000	\$214,685,500	\$127,273,594	\$299,092,000	\$2,715,000	\$954,824,094	\$899,564,000	\$1,854,388,094

Notes:

1. The Highway Users Tax is also known as the "Motor Vehicle Fuel Tax", the "Gasoline Excise Tax" and "Article XIX Revenues."
2. Rolling Hills has no public streets and is therefore not eligible for HUTA or RMRA allocations.
3. Str&HwysCode §§ 2103, 2105, 2106, 2107 and RMRA amounts are paid monthly. Includes special payments for snow removal.
4. Str&HwysCode § 2107.5 amounts are typically paid by the State Controller once per year in July.
5. Str&HwysCode § 2103 allocations replace the former Prop42 TCRF revenues. Previously adjusted annually by the BOE until July 2019.

Local Streets and Roads - Projected FY2024-25 Revenues

Based on State Dept of Finance statewide revenue projections

Estimated May 2025

	Highway Users Tax Acct ⁽¹⁾ Streets & Hwys Code				TOTAL HUTA	Road Maintnc Rehab Acct	TOTAL Annual
	Sec2103 ⁽²⁾	Sec2104	Sec2105	Sec2106			
ALAMEDA COUNTY	9,265,520	14,296,016	6,652,352	441,830	30,655,718	25,500,520	56,156,238
ALPINE COUNTY	179,938	289,418	140,084	20,929	630,369	495,224	1,125,593
AMADOR COUNTY	916,607	759,926	570,799	208,335	2,455,667	2,522,682	4,978,349
BUTTE COUNTY	3,024,801	2,571,660	1,883,635	432,782	7,912,878	8,324,844	16,237,722
CALAVERAS COUNTY	1,388,961	1,073,496	864,948	356,206	3,683,611	3,822,692	7,506,303
COLUSA COUNTY	1,068,127	610,037	665,155	122,583	2,465,902	2,939,695	5,405,597
CONTRA COSTA COUNTY	7,845,209	11,642,596	5,703,803	993,802	26,185,410	21,591,547	47,776,957
DEL NORTE COUNTY	547,270	339,947	340,801	117,979	1,345,997	1,506,193	2,852,190
EL DORADO COUNTY	2,926,160	3,771,370	2,104,857	891,802	9,694,189	8,053,365	17,747,554
FRESNO COUNTY	10,269,883	10,204,820	6,395,365	1,276,910	28,146,978	28,264,725	56,411,703
GLENN COUNTY	1,306,713	751,288	813,729	144,550	3,016,280	3,596,329	6,612,609
HUMBOLDT COUNTY	2,455,006	1,745,220	1,528,806	418,455	6,147,487	6,756,656	12,904,143
IMPERIAL COUNTY	4,647,753	2,550,776	2,894,296	466,631	10,559,456	12,791,525	23,350,981
INYO COUNTY	1,530,195	966,547	952,898	132,470	3,582,110	4,211,395	7,793,505
KERN COUNTY	9,442,467	9,090,309	5,880,108	2,020,620	26,433,504	25,987,512	52,421,016
KINGS COUNTY	1,945,205	1,400,488	1,211,338	245,894	4,802,925	5,353,585	10,156,510
LAKE COUNTY	1,362,083	1,037,508	848,210	349,621	3,597,422	3,748,717	7,346,139
LASSEN COUNTY	1,311,712	934,060	816,843	132,343	3,194,958	3,610,088	6,805,046
LOS ANGELES COUNTY	56,451,207	86,394,164	40,279,396	2,842,176	185,966,943	155,364,746	341,331,689
MADERA COUNTY	2,906,518	1,849,524	1,809,976	540,188	7,106,206	7,999,306	15,105,512
MARIN COUNTY	2,122,290	2,685,318	1,353,767	313,863	6,475,238	5,840,955	12,316,193
MARIPOSA COUNTY	872,597	538,270	543,392	140,364	2,094,623	2,401,556	4,496,179
MENDOCINO COUNTY	2,006,053	1,336,458	1,249,229	413,080	5,004,820	5,521,049	10,525,869
MERCED COUNTY	3,881,385	2,909,727	2,417,055	620,624	9,828,791	10,682,331	20,511,122
MODOC COUNTY	1,286,254	867,047	800,989	66,551	3,020,841	3,540,021	6,560,862
MONO COUNTY	943,622	776,609	587,622	31,963	2,339,816	2,597,031	4,936,847
MONTEREY COUNTY	4,313,958	4,613,873	2,686,431	944,838	12,559,100	11,872,855	24,431,955
NAPA COUNTY	1,484,122	1,640,640	924,208	332,294	4,381,264	4,084,595	8,465,859
NEVADA COUNTY	1,563,123	1,746,187	973,404	322,392	4,605,106	4,302,020	8,907,126
ORANGE COUNTY	20,278,915	32,623,308	15,102,531	835,351	68,840,105	55,811,536	124,651,641
PLACER COUNTY	4,433,717	6,363,769	3,281,752	906,736	14,985,974	12,202,456	27,188,430
PLUMAS COUNTY	1,052,032	1,045,290	655,132	158,221	2,910,675	2,895,396	5,806,071
RIVERSIDE COUNTY	17,805,050	24,834,230	12,040,854	1,841,487	56,521,621	49,002,975	105,524,596
SACRAMENTO COUNTY	12,298,705	15,805,917	8,175,309	2,305,940	38,585,871	33,848,437	72,434,308
SAN BENITO COUNTY	1,054,220	864,775	656,494	173,785	2,749,274	2,901,418	5,650,692
SAN BERNARDINO COUNTY	16,539,334	22,947,963	11,079,158	1,597,178	52,163,633	45,519,479	97,683,112
SAN DIEGO COUNTY	22,764,097	33,624,278	16,146,210	2,146,582	74,681,167	62,651,240	137,332,407
SAN FRANCISCO COUNTY	4,256,183	5,137,188	2,650,453	9,600	12,053,424	11,713,846	23,767,270
SAN JOAQUIN COUNTY	7,017,200	8,278,574	4,369,822	826,867	20,492,463	19,312,706	39,805,169
SAN LUIS OBISPO COUNTY	3,777,560	3,588,387	2,352,400	695,515	10,413,862	10,396,583	20,810,445
SAN MATEO COUNTY	5,060,206	7,695,207	3,613,343	309,915	16,678,671	13,926,675	30,605,346
SANTA BARBARA COUNTY	3,807,601	4,656,814	2,500,462	882,793	11,847,670	10,479,261	22,326,931
SANTA CLARA COUNTY	11,696,288	18,032,328	8,284,958	322,450	38,336,024	32,190,467	70,526,491
SANTA CRUZ COUNTY	2,448,006	2,918,051	1,621,873	675,101	7,663,031	6,737,390	14,400,421
SHASTA COUNTY	2,907,508	2,632,373	1,810,592	435,501	7,785,974	8,002,029	15,788,003
SIERRA COUNTY	516,251	433,958	321,485	36,178	1,307,872	1,420,824	2,728,696
SISKIYOU COUNTY	2,083,038	1,552,809	1,297,170	213,182	5,146,199	5,732,926	10,879,125
SOLANO COUNTY	3,585,098	4,760,372	2,241,842	206,282	10,793,594	9,866,891	20,660,485
SONOMA COUNTY	5,275,399	6,014,130	3,285,150	999,467	15,574,146	14,518,929	30,093,075
STANISLAUS COUNTY	5,424,994	5,929,983	3,378,307	769,235	15,502,519	14,930,644	30,433,163
SUTTER COUNTY	1,657,100	1,245,748	1,031,926	224,231	4,159,005	4,560,663	8,719,668
TEHAMA COUNTY	1,834,336	1,018,342	1,142,296	274,673	4,269,647	5,048,451	9,318,098
TRINITY COUNTY	965,697	695,179	601,368	95,814	2,358,058	2,657,786	5,015,844
TULARE COUNTY	6,557,933	4,993,529	4,083,822	798,663	16,433,947	18,048,712	34,482,659
TUOLUMNE COUNTY	1,285,027	1,096,307	800,225	348,878	3,530,437	3,536,645	7,067,082
VENTURA COUNTY	6,193,200	9,167,174	4,439,040	667,225	20,466,639	17,044,895	37,511,534
YOLO COUNTY	2,368,567	2,415,577	1,474,978	192,423	6,451,545	6,518,760	12,970,305
YUBA COUNTY	1,352,999	969,140	842,553	328,060	3,492,752	3,723,718	7,216,470
Total	\$ 315,561,000	\$ 400,733,999	\$ 213,175,001	\$ 34,619,408	\$ 964,089,408	\$ 868,485,497	\$ 1,832,574,905

Notes:

1. The Highway Users Tax is also known as the "Motor Vehicle Fuel Tax", the "Gasoline Excise Tax" and "Article XIX Revenues."
2. Str&HwysCode § 2103 allocations replace the former Prop42 TCRF revenues. Previously adjusted annually by the BOE until July 2019.

Local Streets and Roads - Projected FY2025-26 Revenues

Based on State Dept of Finance statewide revenue projections

Estimated May 2025

	Highway Users Tax Acct ⁽¹⁾ Streets & Hwys Code				TOTAL HUTA	Road Maintnc Rehab Acct	TOTAL Annual
	Sec2103 ⁽²⁾	Sec2104	Sec2105	Sec2106			
ALAMEDA COUNTY	9,133,302	14,401,245	6,700,463	444,948	30,679,958	26,413,048	57,093,006
ALPINE COUNTY	177,370	289,471	140,128	21,011	627,980	512,946	1,140,926
AMADOR COUNTY	903,527	765,034	574,777	209,769	2,453,107	2,612,956	5,066,063
BUTTE COUNTY	2,981,638	2,589,848	1,896,761	435,836	7,904,083	8,622,746	16,526,829
CALAVERAS COUNTY	1,369,141	1,080,228	870,975	358,707	3,679,051	3,959,486	7,638,537
COLUSA COUNTY	1,052,885	610,704	669,790	123,398	2,456,777	3,044,891	5,501,668
CONTRA COSTA COUNTY	7,733,259	11,727,956	5,744,856	1,000,904	26,206,975	22,364,194	48,571,169
DEL NORTE COUNTY	539,460	342,274	343,176	118,761	1,343,671	1,560,092	2,903,763
EL DORADO COUNTY	2,884,405	3,790,921	2,116,305	898,168	9,689,799	8,341,552	18,031,351
FRESNO COUNTY	10,123,334	10,278,352	6,439,931	1,286,055	28,127,672	29,276,170	57,403,842
GLENN COUNTY	1,288,066	752,126	819,400	145,524	3,005,116	3,725,023	6,730,139
HUMBOLDT COUNTY	2,419,974	1,757,379	1,539,460	421,406	6,138,219	6,998,441	13,136,660
IMPERIAL COUNTY	4,581,431	2,569,448	2,914,465	469,929	10,535,273	13,249,266	23,784,539
INYO COUNTY	1,508,359	967,190	959,539	133,357	3,568,445	4,362,099	7,930,544
KERN COUNTY	9,307,724	9,156,100	5,921,083	2,035,131	26,420,038	26,917,468	53,337,506
KINGS COUNTY	1,917,448	1,410,673	1,219,779	247,599	4,795,499	5,545,162	10,340,661
LAKE COUNTY	1,342,646	1,045,000	854,120	352,075	3,593,841	3,882,864	7,476,705
LASSEN COUNTY	1,292,994	934,837	822,535	133,228	3,183,594	3,739,274	6,922,868
LOS ANGELES COUNTY	55,645,658	87,029,459	40,570,566	2,862,616	186,108,299	160,924,428	347,032,727
MADERA COUNTY	2,865,043	1,862,821	1,822,589	544,016	7,094,469	8,285,559	15,380,028
MARIN COUNTY	2,092,005	2,704,843	1,363,409	316,058	6,476,315	6,049,972	12,526,287
MARIPOSA COUNTY	860,145	538,877	547,179	141,308	2,087,509	2,487,495	4,575,004
MENDOCINO COUNTY	1,977,427	1,345,874	1,257,935	415,992	4,997,228	5,718,618	10,715,846
MERCED COUNTY	3,825,999	2,931,047	2,433,899	625,033	9,815,978	11,064,595	20,880,573
MODOC COUNTY	1,267,899	867,356	806,570	66,962	3,008,787	3,666,700	6,675,487
MONO COUNTY	930,156	776,991	591,716	32,125	2,330,988	2,689,965	5,020,953
MONTEREY COUNTY	4,252,399	4,647,630	2,705,152	951,586	12,556,767	12,297,721	24,854,488
NAPA COUNTY	1,462,944	1,652,524	930,648	334,622	4,380,738	4,230,761	8,611,499
NEVADA COUNTY	1,540,818	1,756,924	980,187	324,649	4,602,578	4,455,967	9,058,545
ORANGE COUNTY	19,989,539	32,863,848	15,211,990	841,309	68,906,686	57,808,735	126,715,421
PLACER COUNTY	4,370,449	6,401,941	3,301,513	913,210	14,987,113	12,639,118	27,626,231
PLUMAS COUNTY	1,037,019	1,046,002	659,697	159,293	2,902,011	2,999,007	5,901,018
RIVERSIDE COUNTY	17,550,975	25,016,517	12,127,663	1,854,706	56,549,861	50,756,532	107,306,393
SACRAMENTO COUNTY	12,123,204	15,922,383	8,234,382	2,322,510	38,602,479	35,059,694	73,662,173
SAN BENITO COUNTY	1,039,176	870,968	661,069	174,970	2,746,183	3,005,245	5,751,428
SAN BERNARDINO COUNTY	16,303,321	23,110,500	11,156,370	1,608,634	52,178,825	47,148,380	99,327,205
SAN DIEGO COUNTY	22,439,257	33,871,355	16,262,766	2,162,003	74,735,381	64,893,196	139,628,577
SAN FRANCISCO COUNTY	4,195,448	5,174,905	2,668,923	9,600	12,048,876	12,133,023	24,181,899
SAN JOAQUIN COUNTY	6,917,066	8,339,504	4,400,273	832,764	20,489,607	20,003,805	40,493,412
SAN LUIS OBISPO COUNTY	3,723,655	3,614,493	2,368,793	700,464	10,407,405	10,768,622	21,176,027
SAN MATEO COUNTY	4,987,998	7,751,834	3,639,449	312,082	16,691,363	14,425,037	31,116,400
SANTA BARBARA COUNTY	3,753,267	4,690,741	2,518,321	889,094	11,851,423	10,854,258	22,705,681
SANTA CLARA COUNTY	11,529,384	18,165,213	8,344,968	324,707	38,364,272	33,342,394	71,706,666
SANTA CRUZ COUNTY	2,413,073	2,938,984	1,633,295	679,903	7,665,255	6,978,485	14,643,740
SHASTA COUNTY	2,866,018	2,650,326	1,823,209	438,574	7,778,127	8,288,379	16,066,506
SIERRA COUNTY	508,884	434,089	323,725	36,370	1,303,068	1,471,668	2,774,736
SISKIYOU COUNTY	2,053,313	1,554,198	1,306,209	214,651	5,128,371	5,938,077	11,066,448
SOLANO COUNTY	3,533,940	4,795,345	2,258,001	207,701	10,794,987	10,219,974	21,014,961
SONOMA COUNTY	5,200,120	6,057,976	3,308,042	1,006,610	15,572,748	15,038,485	30,611,233
STANISLAUS COUNTY	5,347,581	5,973,586	3,401,849	774,716	15,497,732	15,464,933	30,962,665
SUTTER COUNTY	1,633,454	1,254,791	1,039,117	225,779	4,153,141	4,723,865	8,877,006
TEHAMA COUNTY	1,808,160	1,019,965	1,150,256	276,585	4,254,966	5,229,108	9,484,074
TRINITY COUNTY	951,916	695,580	605,559	96,436	2,349,491	2,752,894	5,102,385
TULARE COUNTY	6,464,352	5,029,566	4,112,280	804,356	16,410,554	18,694,580	35,105,134
TUOLUMNE COUNTY	1,266,690	1,102,963	805,801	351,326	3,526,780	3,663,203	7,189,983
VENTURA COUNTY	6,104,824	9,234,201	4,470,906	671,971	20,481,902	17,654,842	38,136,744
YOLO COUNTY	2,334,768	2,433,251	1,485,256	193,742	6,447,017	6,752,032	13,199,049
YUBA COUNTY	1,333,692	975,845	848,425	330,358	3,488,320	3,856,970	7,345,290
Total	\$ 311,057,999	\$ 403,574,002	\$ 214,685,500	\$ 34,865,197	\$ 964,182,698	\$ 899,564,000	\$ 1,863,746,698

Notes:

1. The Highway Users Tax is also known as the "Motor Vehicle Fuel Tax", the "Gasoline Excise Tax" and "Article XIX Revenues."
2. Str&HwysCode § 2103 allocations replace the former Prop42 TCRF revenues. Previously adjusted annually by the BOE until July 2019.